

DHL SLEEP CENTER
SUITE 150

DEBORAH HEALTH MEDICAL OFFICE BUILDING

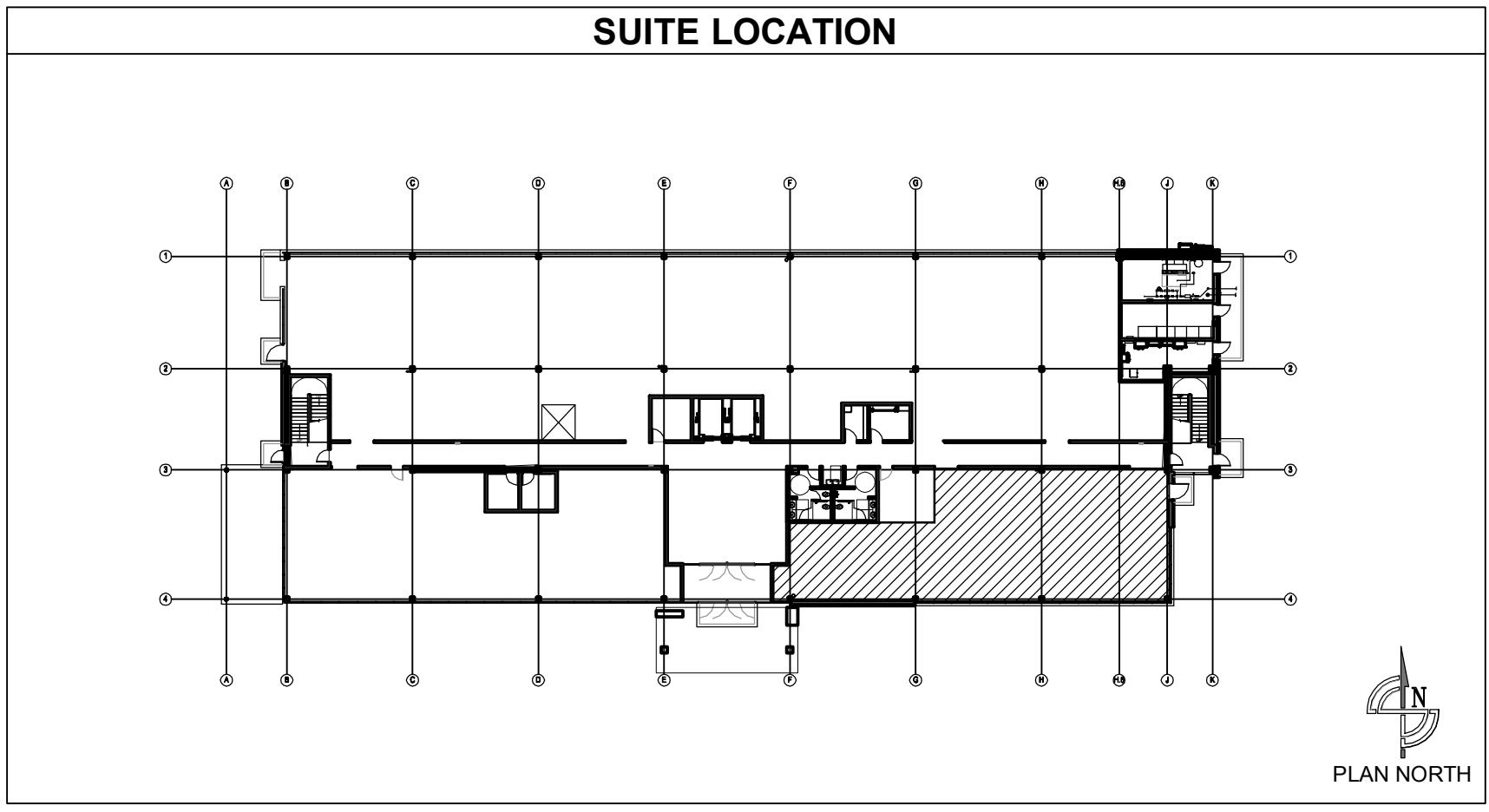
ARCHITECTURAL

PLUMBING

MECHANICAL

ELECTRICAL

1.	T1.0	Title Sheet	14.	P1.0	Plumbing Schedules and Details	17.	M2.1	Partial First Floor HVAC Plan	24.	E1.1	Electrical Wiring Symbols and General Notes
2.	A1.0	Code Analysis, General Notes, and Partial First Floor Egress Plans	15.	P2.0	Partial First Floor Water Plan	18.	M4.1	HVAC Schedules	25.	E2.1	Electrical Floor Plan - Lighting
3.	A2.1	Partial First Floor Plans	16.	P2.1	Partial First Floor Drain Plan	19.	M5.1	HVAC Details	26.	E2.2	Electrical Floor Plan - Outlets
4.	A2.5	Enlarged Floor Plans				20.	M6.1	HVAC Calculations	27.	E3.1	Electrical Riser
5.	A7.1	Room Finish Schedule and Details				21.	M6.2	HVAC Calculations	28.	E4.1	Electrical Panels
6.	A8.1	Interior Elevations				22.	M7.1	HVAC Control Diagrams	29.	E4.2	Electrical Schedules
7.	A8.5	Cabinet, Counter, and Mounting Height Details				23.	M7.2	HVAC Control Diagrams	30.	E5.1	Electrical Submetering Details
8.	A9.1	Partial First Floor Reflected Ceiling Plan									
9.	A10.1	Typical Wall Types and Details									
10.	A10.2	Interior Details									
11.	A10.6	Penetration Details									
12.	A10.7	Penetration Details									
13.	A11.1	Door Schedule and Details									



100% CONSTRUCTION DOCUMENT SET
DATED: JANUARY 13, 2017

These drawings, as instruments of service, remain the property of the Architect or Engineer. Any changes, publication, or use of any kind is prohibited unless expressly authorized by said party.
Copyright ©2017

Owner
DEBORAH HEALTH
MEDICAL OFFICE BUILDING

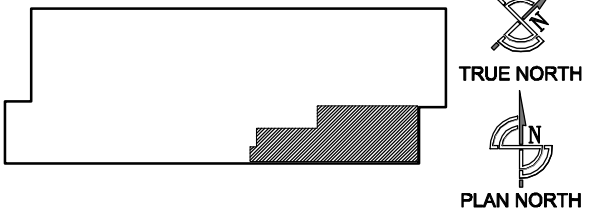


DHL SLEEP CENTER
SUITE # 150

Revisions

No.	Description	Date
01	100% Construction Document Set	01/13/17

KEY PLAN



Drafted By: JTG	Checked By: AJV
Date Drafted: 01/13/17	

TITLE SHEET

T1.0

SCALE: N.T.S.

AREA OF TENANT SPACE	
TOTAL SQUARE FEET =	2,710 SQ. FT.

PLUMBING FIXTURE COUNT							
USE	OCCUPANTS		WATER CLOSETS REQUIRED		LAVATORIES REQUIRED		DRINKING FOUNTAINS REQUIRED
	MEN	WOMEN	MEN	WOMEN	MEN	WOMEN	
BUSINESS AREAS	9	9	$\frac{1}{10}$ OCC = 0.60	$\frac{1}{10}$ OCC = 0.60	$\frac{1}{15}$ OCC = 0.60	$\frac{1}{10}$ OCC = 0.60	$\frac{1}{100}$ = 0.18
26 OCC. x 2/3 = 18							
VESTIBULE / STAFF LOUNGE	2	2	$\frac{1}{50}$ OCC = 0.04	$\frac{1}{50}$ OCC = 0.04	$\frac{1}{50}$ OCC = 0.04	$\frac{1}{50}$ OCC = 0.04	$\frac{1}{1000}$ = 0.004
4 OCC. x 2/3 = 3							
TOTAL			(0.64) 1	(0.64) 1	(0.64) 1	(0.64) 1	(0.184) 1
(*) ADDITIONAL FIXTURES PROVIDED IN MAIN CORRIDOR AS A PART OF SHELL BUILDING PERMIT.			WATER CLOSETS PROVIDED		LAVATORIES PROVIDED		DRINKING FOUNTAINS PROVIDED
			MEN	WOMEN	MEN	WOMEN	
			1*	1*	1*	1*	2*

BUILDING HEIGHT AND AREA (CORE AND SHELL)	
ACTUAL HEIGHT AND AREA	3 STORIES
1. HEIGHT (STORIES)	44'-0"
2. HEIGHT (FEET)	20,334 SQ.FT.
3. AREA (1ST FLOOR)	

DESIGN OCCUPANT LOAD PER TABLE 1004.1.1			
BUSINESS AREAS	2,505 SQ. FT.	MAX. 100 GSF PER OCCUPANT = 2,505/100 =	26 OCCUPANTS
ASSEMBLY AREAS (VESTIBULE, STAFF LOUNGE)	205 SQ. FT.	MAX. 15 NSF PER OCCUPANT = 205/15 =	14 OCCUPANTS (4 OCCUPANTS)
TOTAL			40 OCCUPANTS

EGRESS REQUIREMENTS	
A. EXIT ACCESS TRAVEL DISTANCE 300' MAX. WITH SPRINKLER SYSTEM	TABLE 1015.1
B. EGRESS WIDTH/OCCUPANT MULTIPLIER	SECTION 1005.1
1. STAIRS = 0.3"/OCCUPANT WITH SPRINKLERS	12.0"
2. OTHER EGRESS = 0.2"/OCCUPANT WITH SPRINKLERS	8.0"
C. MINIMUM WIDTH OF CORRIDOR	SECTION 1018.2
1. MINIMUM WIDTH PER CODE	44"
2. ACTUAL WIDTH	60"
D. DEAD END CORRIDOR	50'
1. SECTION 1020.4 - EXCEPTION #2	

ABBREVIATIONS					
@	AT	FE	FIRE EXTINGUISHER	PLS	PLASTIC LAMINATE SHELF
ACOUS.	ACOUSTICAL	FEC	FIRE EXTINGUISHER	PTD	PAINTED
ADJ.	ADJUSTABLE		CABINET	PLWD.	PLYWOOD
AL	ALUMINUM	FG	FIXED GLASS	PT	PASS-THRU
A.F.F.	ABOVE FINISHED FLOOR	FHC	FIRE HOSE CABINET	QT.	QUARRY TILE
ANOD.	ANODIZED	FIN.	FINISHED	RD	ROOF DRAIN
B.L.	BRICK LEDGE	FLR.	FLOOR	REF	REFRACTORY
BITUM.	BITUMINOUS	FUT.	FUTURE	REFR.	REFRIGERATOR
BLDG.	BUILDING	FTG.	FOOTING	REF. SP.	REFRIGERATOR SPACE
BD.	BOARD	FURR.	FURRING	REINF.	REINFORCING
BRG.	BEARING	GA.	GAUGE	RM.	ROOM
BUS/RCP/T	BUSINESS/RECEPTION	GALV.	GALVANIZED	R.O.	ROUGH OPENING
C	CONDUIT	GB	GRAB BAR	R&S	ROD & SHELF
CAB.	CABINET	GBW	GYPSPUM WALLBOARD	RSA	RENTAL SUITE AREA
CI	CAST IRON	GYP	GYPSPUM	RX	PRESCRIPTION DESK
CER. T.	CERAMIC TILE	HDCP.	HANDICAPPED	SIM.	SIMILAR
CH	COAT HOOK	HDR.	HEADER	SHT.	SHEET
CJ	CONTROL JOINT	HM	HOLLOW METAL	SFT.	SOFFIT
CKT.	CIRCUIT	HR.	HOUR	SGW	SLIDING GLASS WINDOW
CL	CARPET LINE	HGT.	HEIGHT	SH.	SHELF
CLG.	CEILING	HVAC	HEATING VENTILATING & AIR	SB	SUPPORT BRACKET
CLO.	CLOSET		CONDITIONING	S/P	SPECIAL PROCEDURE
CMU	CONCRETE MASONRY UNITS	ID	INSIDE DIAMETER	STL.	STEEL
CNTR.	COUNTER	IE	INVERT ELEVATION	STRUCT.	STRUCTURAL
COL.	COLUMN	INSUL.	INSULATION	SS	STAINLESS STEEL
CONC.	CONCRETE	JB	JUNCTION BOX	SSP	SCALE SPACE
CONN.	CONNECTION	JST.	JOIST	SURG.	SURGICAL
CONS.	CONSULTATION/OFFICE	KS	KNEE SPACE	TC	TUBE COLUMN
CONT.	CONTINUOUS	KW	KILOWATT	TOC	TOP OF COLUMN
CONTR.	CONTRACTOR	LAB	LABORATORY	TEL.	TELEPHONE
CORR.	CORRIDOR	LGW	LEAD GLASS WINDOW	T&P	TEMPERATURE & PRESSURE
CP	CHROME PLATED	LL	LEAD LINED	TEMJ	TOP ELEVATION MATCHES
CR	CRASH RAIL	LLH	LONG LEG HORIZONTAL		JOIST
CRS	COURSE	LLV	LONG LEG VERTICAL	TOS	TOP OF STEEL
CSBA	COLOR SELECTED BY ARCHITECT	LP	LIGHTPROOF	TLT.	TOILET
CT	CURTAIN TRACK	MAX.	MAXIMUM	TW	TYPEWRITER SPACE
CTR.	COUNTER	M	MIRROR	TYP.	TYPICAL
CU	COPPER	MFR.	MANUFACTURER	UL	UNDERWRITERS
DN.	DOWN	MIN.	MINIMUM		LABORATORIES
DW.G.	DRAWING	M.O.	MASONRY OPENING	UCR	UNDERCOUNTER
EDF	ELECTRIC DRINKING FOUNTAIN	M/S	MIRROR & SHELF		REFRIGERATOR SPACE
EUH	ELECTRIC UNIT HEATER	M/SURG.	METAL TOILET PARTITION	UNO	UNLESS NOTED OTHERWISE
EW	ELECTRIC WALL HEATER	MTG.	MINOR SURGERY	VVC	VINYL WALL COVERING
ELECT.	ELECTRIC	NEC	NATIONAL ELECTRICAL CODE	VB	VENT BOX
EJ	EXPANSION JOINT	NIC	NOT IN CONTRACT	VERT.	VERTICAL
EA.	EACH	NIS	NURSE STATION	V.I.F.	VERIFY IN FIELD
EL.	ELEVATION	O.C.	ON CENTER	WG	WITH
ELEV.	ELEVATOR	O.D.	OUTSIDE DIAMETER	WDW.	WINDOW
EMERG.	EMERGENCY	O.F.	OVERFLOW	WL	WARNING LIGHT
EP	END PANEL	O.F.I.C.	OWNER FURNISHED, INSTALLED BY CONTRACTOR	WP	WEATHERPROOF
ES	END SUPPORT			WWM	WELDED WIRE MESH
EQUIP.	EQUIPMENT	OPC.	OFFICE	W.D.	WRITING DESK
EXIST.	EXISTING	OPP.	OPPOSITE HAND	XFMR.	TRANSFORMER
EXT.	EXTERIOR	PA	PARTITION ANCHOR		
EXAM	EXAMINATION	P.H.	PANIC HARDWARE		
EXP.	EXPANSION	PB	PASS BOX		
FACP	FIRE ALARM CONTROL PANEL	PC	PIPE COLUMN		
FD	FLOOR DRAIN	PD	PENCIL DRAWER		
		PL	PLATE		

GOVERNING CODES	
BUILDING CODE	2015 INTERNATIONAL BUILDING CODE - NEW JERSEY ED.
ACCESSIBILITY CODE	2009 ICC/ANSI 117.1
MECHANICAL CODE	2015 INTERNATIONAL MECHANICAL CODE
PLUMBING CODE	2015 NATIONAL STANDARD PLUMBING CODE
ELECTRICAL CODE	2014 NATIONAL ELECTRICAL CODE - NFPA 70
FIRE CODE	2015 INTERNATIONAL FIRE CODE
LIFE SAFETY CODE	2012 NFPA 101 LIFE SAFETY CODE (CMS, NJDOH & TJC)
ENERGY CODE	ASHRAE 90.1 - 2013 EDITION PER NJAC
OTHER	2015 NEW JERSEY ADMINISTRATIVE CODE 5:23
FGI:	UNIFORM CONSTRUCTION CODE 2014 GUIDELINES FOR THE DESIGN AND CONSTRUCTION OF HOSPITALS AND OUTPATIENT FACILITIES (NJDOH)

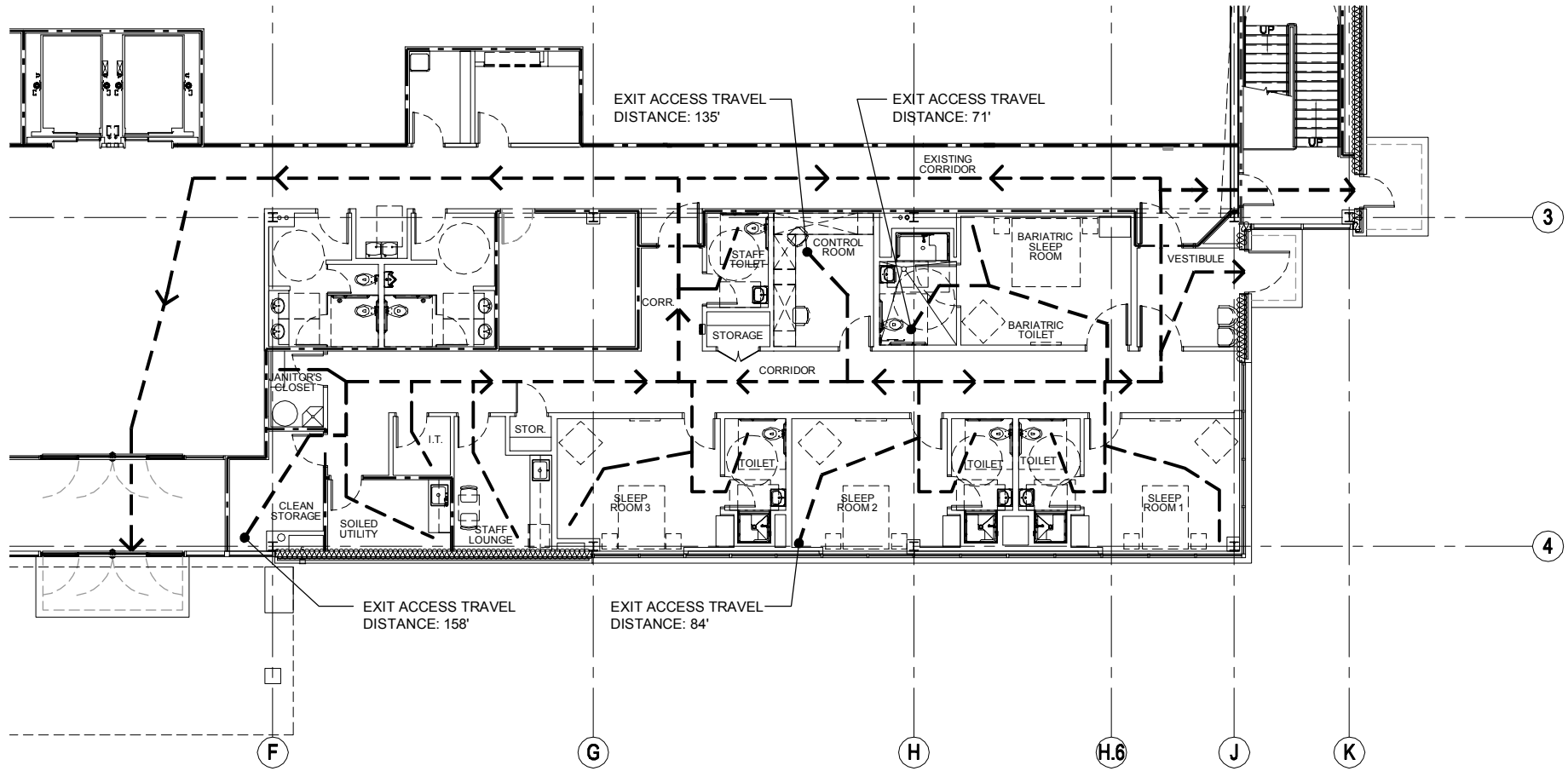
CONSTRUCTION CLASSIFICATION	
TYPE II-A / II(000) - FULLY SPRINKLERED	

USE AND OCCUPANCY	
OCCUPANCY: BUSINESS GROUP B - MEDICAL OFFICE	SECTION 304.1

GEOGRAPHICAL INFORMATION	
CLIMATE ZONE:	4A
SEISMIC ZONE CLASS:	C
WIND LOAD:	EXPOSURE - B

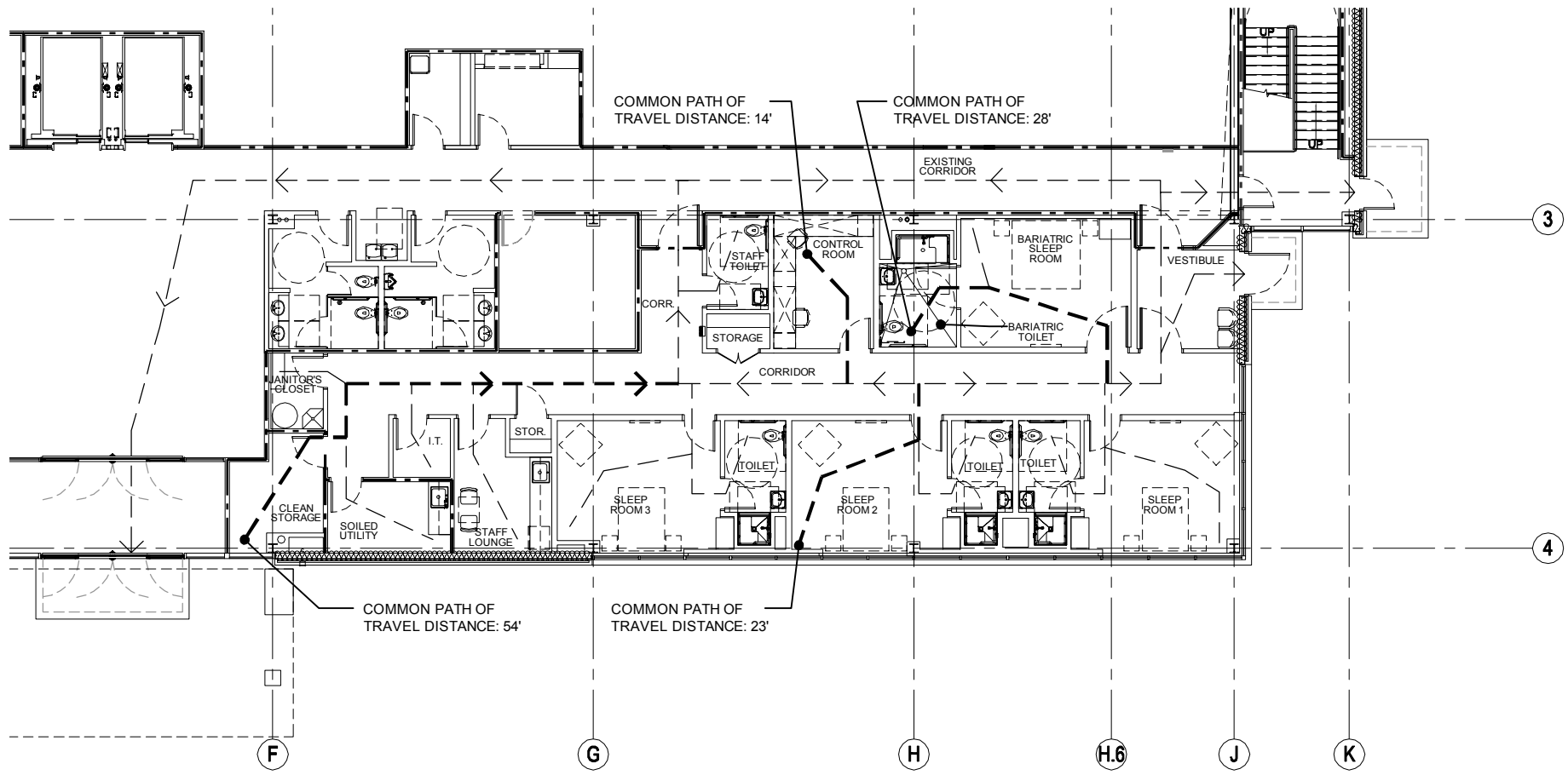
BUILDING FIRE PROTECTION			
FIRE SUPPRESSION SYSTEM:	NFPA 13 - FULLY SPRINKLERED	SECTION 903.3.1.1	
STANDPIPE SYSTEM:	YES	SECTION 905.3.1	
FIRE ALARM SYSTEM:	YES	SECTION 907.2.1/2	
STRUCTURAL FRAME:	REQUIRED 1 HOUR	PROVIDED 1 & 2 HOUR	SECTION 601
BEARING WALLS:			
INTERIOR:	1 HOUR	N/A	SECTION 601
EXTERIOR:	1 HOUR	N/A	SECTION 602
NON BEARING WALLS AND PARTITIONS:			
INTERIOR:	0 HOUR	1 & 2 HOUR	SECTION 601
EXTERIOR:	0 HOUR	0 HOUR	SECTION 602
FLOOR CONSTRUCTION:	1 HOUR	1 & 2 HOUR	SECTION 601
ROOF CONSTRUCTION:	1 HOUR	1 HOUR	SECTION 601
STAIRS AND ELEVATORS:	2 HOUR	2 HOUR	SECTION 1023.7
SHAFTS:	1 & 2 HOUR	1 & 2 HOUR	SECTION 713.4
FIRE DAMPERS REQUIRED:	YES		SECTION 716
SMOKE DAMPERS REQUIRED:	YES		SECTION 716

GENERAL NOTES	
A.	ALL WORK SHALL BE DONE IN STRICT ACCORDANCE WITH ALL APPLICABLE CODES.
B.	CONTRACTOR SHALL FIELD VERIFY ALL DIMENSIONS IN THE FIELD AND SHALL REPORT ANY DISCREPANCIES TO THE ARCHITECT.
C.	MECHANICAL CONTRACTOR SHALL INSTALL COMPLETE HVAC SYSTEM IN ACCORDANCE WITH ALL APPLICABLE LOCAL, STATE, AND FEDERAL CODES AND BUILDING STANDARDS.
D.	PLUMBING CONTRACTOR SHALL INSTALL PLUMBING SYSTEMS IN ACCORDANCE WITH ALL APPLICABLE LOCAL, STATE, AND FEDERAL CODES AND BUILDING STANDARDS.
E.	ELECTRICAL CONTRACTOR SHALL INSTALL COMPLETE ELECTRICAL SYSTEMS IN ACCORDANCE WITH ALL APPLICABLE LOCAL, STATE, AND FEDERAL CODES AND BUILDING STANDARDS.
F.	CONTRACTOR WILL COORDINATE KEY SCHEDULE WITH THE OWNER, PRIOR TO PROJECT SPACE COMPLETION. CLEARLY MARKED KEYS WILL BE TURNED OVER TO OWNER'S REP.
G.	THESE CONSTRUCTION DRAWINGS AND SPECIFICATIONS ARE A SET AND SHALL BE DISTRIBUTED INTACT. IF SETS ARE DISASSEMBLED TO OBTAIN BIDS FROM SUB-CONTRACTOR, GENERAL CONTRACTOR ASSUMES ALL RESPONSIBILITY FOR SUB-CONTRACTOR COORDINATION.
H.	CONTRACTOR SHALL BE RESPONSIBLE FOR CONTRACTING OUT DESIGN/BUILD OF AUTOMATIC FIRE SUPPRESSION SYSTEM. LOCAL FIRE PROTECTION CONTRACTOR (FPC) SHALL DESIGN AUTOMATIC FIRE SUPPRESSION SYSTEM IN ACCORDANCE WITH ALL APPLICABLE LOCAL, STATE, AND FEDERAL CODES AND BUILDING STANDARDS. FPC SHALL BE RESPONSIBLE FOR ALL INCIDENTAL COSTS RELATIVE TO THE COMPLETE INSTALLATION OF THE SYSTEM INCLUDING SYSTEM DESIGN, PLAN SUBMITTALS, FEES AND PERMITS. FPC SHALL BE RESPONSIBLE FOR SUBMITTING THE NECESSARY PLAN DATA TO THE APPROPRIATE BODIES FOR PLAN REVIEW AND PERMIT ISSUANCE.
I.	CONTRACTOR SHALL HIRE LOCAL FIRE ALARM CONTRACTOR TO DESIGN FIRE ALARM SYSTEM IN ACCORDANCE WITH ALL APPLICABLE LOCAL, STATE AND FEDERAL CODES AND BUILDING STANDARDS. FIRE ALARM CONTRACTOR IS RESPONSIBLE FOR ALL INCIDENTAL COSTS RELATIVE TO THE COMPLETE INSTALLATION OF THIS SYSTEM INCLUDING SYSTEM DESIGN, BATTERY CALCULATIONS, PLAN SUBMITTALS, FEES AND PERMITS.
J.	THE CONTRACTOR, PRIOR TO SUBMISSION OF BID, SHALL VISIT THE PROJECT SITE AND BECOME FAMILIAR WITH ALL VISIBLE EXISTING CONDITIONS. THIS SHALL INCLUDE CONDITIONS ABOVE EXISTING REMOVABLE SUSPENDED CEILINGS BOTH AT THE PROJECT FLOOR LEVEL AND AT FLOOR LEVELS BELOW AND ABOVE, WHEREVER NEW WORK IS TO BE INSTALLED. AS A RESULT OF HAVING VISITED THE SITE, CONTRACTOR SHALL BE RESPONSIBLE FOR THE INSTALLATION OF THE NEW WORK AS IT RELATES TO THE EXISTING CONDITIONS. THE SUBMISSION OF A BID SHALL BE THE BIDDER'S ACKNOWLEDGEMENT OF HIS VISITATION TO AND INSPECTION OF THE SITE CONDITIONS. THE CONTRACTOR, PRIOR TO SUBMITTING BID, SHALL NOTIFY AND COORDINATE WITH ALL OTHER TRADES THAT MAY BE AFFECTED BY THE INSTALLATION OF THIS WORK. THOSE AFFECTED TRADES SHALL LIST AS A SEPARATE LINE ITEM IN ADDITION TO BASE BID, THE COST TO MODIFY EXISTING PLUMBING, ELECTRICAL AND/OR MECHANICAL SYSTEMS TO ALLOW FOR THE INSTALLATION OF NEW WORK FOR THIS PROJECT. COORDINATE THE ABOVE WITH GENERAL CONTRACTOR DURING BIDDING.



1 PARTIAL FIRST FLOOR EXIT ACCESS TRAVEL DISTANCE PLAN
SCALE: 1/16" = 1'-0"

EGRESS REQUIREMENTS		
	2015 IBC - NJ EDITION	2012 NFPA 101 - LSC
TRAVEL DISTANCE:	300 FT (TABLE 1017.2)	200 FT (20.2.6.2.1)
COMMON PATH OF TRAVEL:	100 FT (TABLE 1006.2.1)	100 FT (38.2.5.3.1)
DEAD-END CORRIDORS:	50 FT (1020.4)	50 FT (38.2.5.2.1)



2 PARTIAL FIRST FLOOR COMMON PATH OF TRAVEL DISTANCE PLAN
SCALE: 1/16" = 1'-0"

These drawings, as instruments of service, remain the property of the Architect or Engineer. Any changes, publication, or use of any kind is prohibited unless expressly authorized by said party.

Copyright ©2017

Owner

DEBORAH HEALTH MEDICAL OFFICE BUILDING



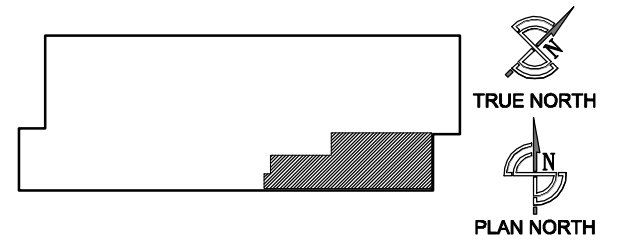
DHL SLEEP CENTER

SUITE # 150

Revisions

No.	Description	Date
01	100% Construction Document Set	01/13/17

KEY PLAN



Drafted By:
JTG

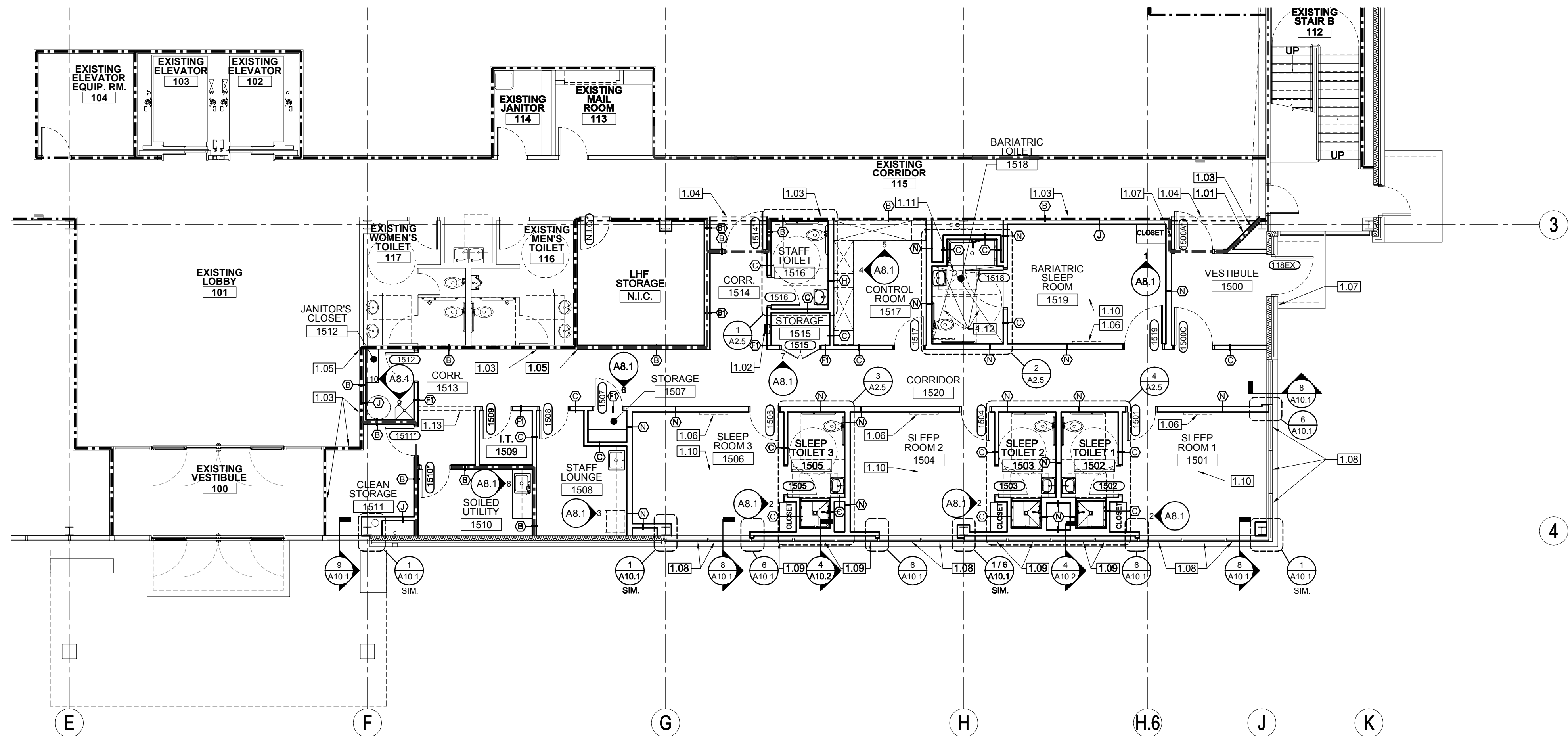
Checked By:
AJV

Date Drafted:
01/13/17

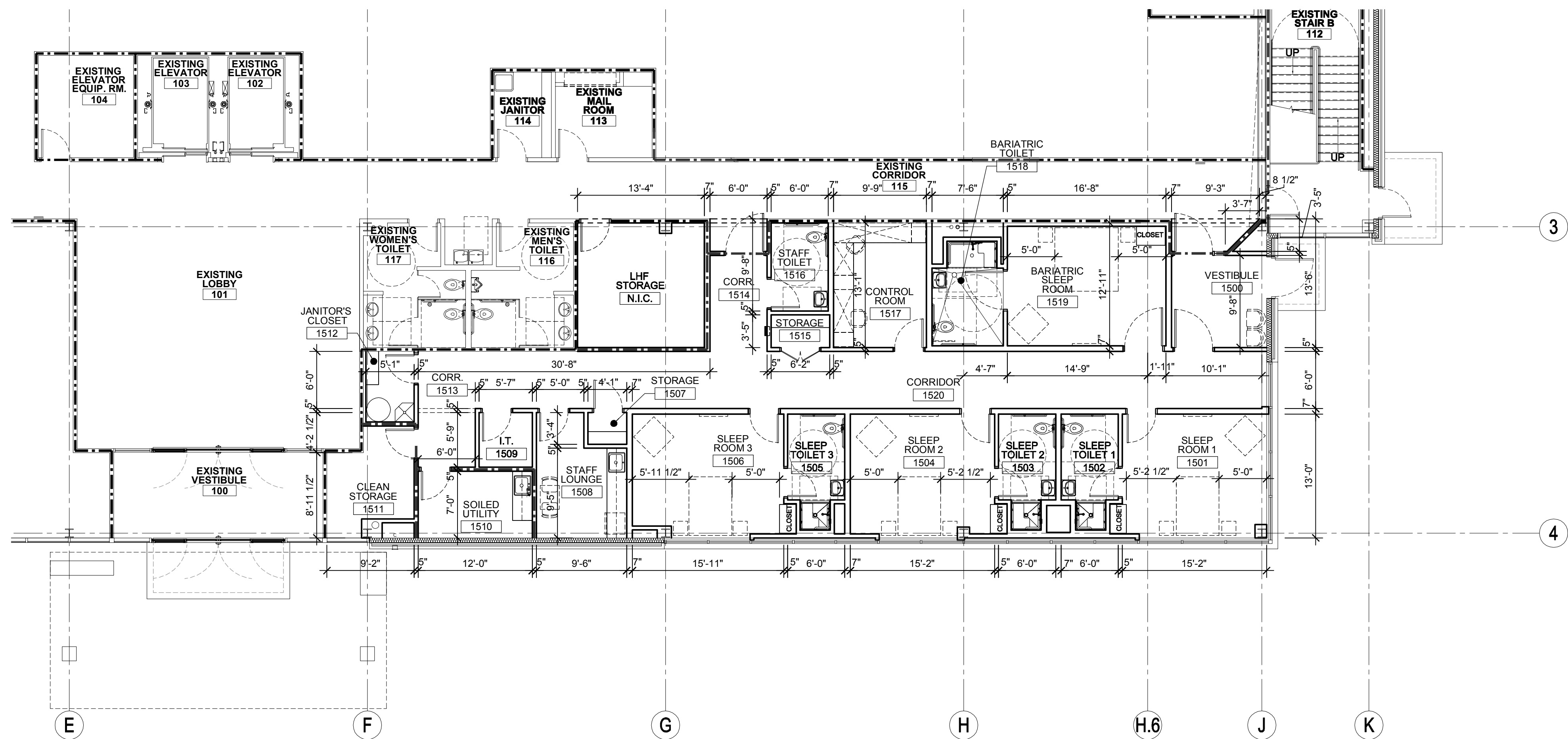
CODE ANALYSIS,
GENERAL NOTES, AND
PARTIAL FIRST FLOOR
EGRESS PLANS

A1.0

SCALE: 1/16" = 1'-0"



2 PARTIAL FIRST FLOOR PLAN - NOTED
SCALE: 1/8" = 1'-0"



1 PARTIAL FIRST FLOOR PLAN - DIMENSIONED
SCALE: 1/8" = 1'-0"

LEGEND		
NAME 0000	ROOM NAME AND NUMBER	DETAIL NUMBER
1.00	KEYNOTE SYMBOL - SEE KEYNOTE LEGEND	SECTION DETAIL SYMBOL
0000	DOOR REFERENCE MARK	SHEET NUMBER
0000	REVISION CLOUD AND REFERENCE MARK	ELEVATION NUMBER
0000	WALL TYPE REFERENCE MARK	ELEVATION DETAIL SYMBOL
0000	WINDOW TYPE - SEE SHEET A11.1	SHEET NUMBER
0000	EXISTING WALL	DETAIL NUMBER
0000	NEW WALL	DETAIL SYMBOL
0000	WALL TO BE REMOVED	SHEET NUMBER
0000		1 HOUR FIRE RATED WALL (WALL TYPE 'B')

FLOOR PLAN NOTES	
1.	ALL WALLS ARE TYPE 'F' UNLESS NOTED OTHERWISE. SEE SHEET A10.1 FOR WALL TYPES AND DETAILS.
2.	USE WATER RESISTANT GYPSUM BOARD IN EXISTING TOILET ROOMS AND OTHER SIMILAR ROOMS AS REQUIRED FOR ALL NECESSARY PATCHWORK.
3.	ALL CHANGES TO THE SHELL AND CORE WORK DUE TO TENANT WORK SHALL BE INCLUDED IN THE COST FOR TENANT WORK
4.	DIMENSIONS ARE FACE TO FACE (NOMINAL) OF FINISH MATERIAL, UNLESS NOTED OTHERWISE
5.	PROVIDE ALUMINUM MINI BLINDS TO MATCH EXISTING BUILDING STANDARD AT ALL EXTERIOR WINDOW LOCATIONS WITHIN TENANT SUITE. MINI BLINDS SHALL BE MOUNTED WITHIN THE DEPTH OF THE WINDOW FRAMING AT EACH LOCATION. CONTRACTOR TO FIELD VERIFY QUANTITIES, DIMENSIONS, AND STYLE PRIOR TO FABRICATION AND COORDINATE ALL INSTALLERS. CONFIRM WITH BUILDING PROPERTY MANAGEMENT PRIOR TO ORDERING AND INSTALLATION.
6.	PROVIDE WIRE ACCESS GROMMET HOLES, PER SPECIFICATION SECTION 064000. IN ALL COUNTERTOPS THAT ARE LOCATED ABOVE OPENKNEE SPACE. PROVIDE ONE HOLE PER WORKSTATION - FIELD VERIFY AND CONFIRM LOCATIONS WITH TENANTS AND LANDMARK.
7.	CONTRACTOR SHALL MAINTAIN SHELL WALL PARTITION FIRE AND SMOKE RATINGS.

FLOOR PLAN KEY NOTES	
1.01	SUITE ENTRY PLAQUE - SEE DETAIL 1/A10.2
1.02	FIRE EXTINGUISHER AND CABINET - SEE DETAIL 2/A10.2 FOR MORE INFORMATION (VERIFY FINAL LOCATION WITH FIRE MARSHAL)
1.03	TENANT BUILD-OUT CONTRACTOR TO COMPLETE EXISTING WALL PARTITION TO EQUAL WALL PARTITION TYPE 'B'
1.04	PORTION OF SHELL WALL SHALL BE REMOVED FOR TENANT SUITE LAYOUT
1.05	ALIGN SURFACE WITH EXISTING ADJACENT SURFACE
1.06	PROVIDE BLOCKING FOR WALL MOUNTED TV AT 72" A.F.F. (CONFIRM WITH TENANT BEFORE INSTALLATION)
1.07	PROVIDE ELECTRICAL PROVISIONS FOR DOORBELL AND CAMERA AT DOOR. SEE ELECTRICAL DRAWINGS AND COORDINATE WITH TENANT PRIOR TO INSTALLATION.
1.08	PROVIDE BLACK OUT BLINDS FOR ALL WINDOW OPENINGS ALONG SLEEP ROOMS. TENANT WILL PROVIDE DRAPERY FOR ROOMS; G.C. TO PROVIDE BLOCKING IN HEADERS FOR ANY WINDOW TREATMENTS.
1.09	PROVIDE BUILDING STANDARD BLINDS WHERE WALL IS IN FRONT OF WINDOWS. INSTALL IN CLOSED POSITION.
1.10	PROVIDE CONDUIT TO CAMERA MONITORING SYSTEM. COORDINATE WITH TENANT PRIOR TO INSTALLATION.
1.11	FLOOR DRAIN. SEE PLUMBING DRAWINGS FOR ADDITIONAL INFORMATION.
1.12	GENERAL CONTRACTOR SHALL SLOPE FLOOR TO DRAIN. AVOID SHOWER WATER FLOWING INTO SLEEP ROOM.
1.13	SOFFIT ABOVE - REFER TO A9.1 REFLECTED CEILING PLAN.

These drawings, as instruments of service, remain the property of the Architect or Engineer. Any changes, publication, or use of any kind is prohibited unless expressly authorized by said party.

Copyright ©2017

Owner

DEBORAH HEALTH MEDICAL OFFICE BUILDING



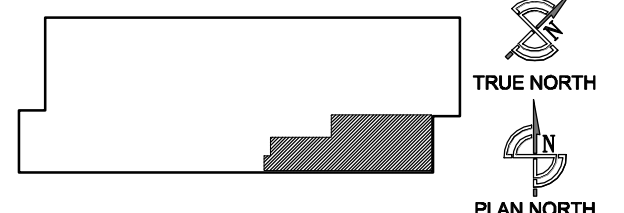
DHL SLEEP CENTER

SUITE # 150

Revisions

No.	Description	Date
01	100% Construction Document Set	01/13/17

KEY PLAN



Drafted By:

Checked By:

JTG

AJV

Date Drafted:

01/13/17

PARTIAL FIRST
FLOOR PLAN

A2.1

SCALE: 1/8" = 1'-0"

ABBREVIATIONS	
PT	PAINT
PLAM	PLASTIC LAMINATE
HM	HOLLOW METAL
ALUM	ALUMINUM
PREF	PREFINISHED
GL	GLASS
WD	WOOD
VP	VINYL PLANK
CT	CERAMIC TILE

ROOM FINISH GENERAL NOTES	
1.	CONTRACTOR SHALL PAINT DOOR FRAME TO MATCH ADJACENT WALL UNLESS NOTED OTHERWISE ON DRAWINGS OR SCHEDULES
2.	VINYL FLOOR TRANSITION STRIP COLOR SHALL MATCH VINYL BASE COLOR
3.	CEILINGS ARE ALL 2X2 ACOUSTICAL CEILING TILES UNLESS OTHERWISE NOTED. SEE SPECIFICATIONS FOR MORE INFORMATION.
4.	ALL TOILET ROOM WALLS SHALL RECEIVE EPOXY PAINT - SEE SPECIFICATIONS FOR MORE INFORMATION.
5.	ALL ADJUSTABLE PLASTIC LAMINATE SHELVES PER SPECIFICATION SECTION 064000.
6.	SOILED UTILITY ROOM AND JANITOR'S CLOSET SHALL RECEIVE EPOXY PAINT, SEE SPECIFICATIONS FOR MORE INFORMATION.
7.	FOR BASE DETAIL IN TOILET ROOMS, SEE 4/A7.1.

ROOM FINISH SCHEDULE									
ROOM NO.	ROOM NAME	FLOOR		WALLS				PLAM	
		FINISH	BASE	NORTH	EAST	SOUTH	WEST	COUNTER	CASEWORK
1500	VESTIBULE	CPT-3	VB-3	PT-7	PT-7	PT-7	PT-7	-	-
1501	SLEEP ROOM 1	CPT-3	VB-3	PT-7	PT-8	PT-7	PT-7	-	PLAM-9
1502	SLEEP TOILET 1	SV-3	SV-3	SEE NOTE 4; SEE 3/A7.1	SEE NOTE 4; SEE 3/A7.1	SEE NOTE 4; SEE 3/A7.1	SEE NOTE 4; SEE 3/A7.1	-	-
1503	SLEEP TOILET 2	SV-3	SV-3	SEE NOTE 4; SEE 3/A7.1	SEE NOTE 4; SEE 3/A7.1	SEE NOTE 4; SEE 3/A7.1	SEE NOTE 4; SEE 3/A7.1	-	-
1504	SLEEP ROOM 2	CPT-3	VB-3	PT-7	PT-7	PT-7	PT-8	-	PLAM-9
1505	SLEEP TOILET 3	SV-3	SV-3	SEE NOTE 4; SEE 3/A7.1	SEE NOTE 4; SEE 3/A7.1	SEE NOTE 4; SEE 3/A7.1	SEE NOTE 4; SEE 3/A7.1	-	-
1506	SLEEP ROOM 3	CPT-3	VB-3	PT-7	PT-7	PT-7	PT-8	-	PLAM-9
1507	STORAGE	VP-13	VB-1	PT-1	PT-1	PT-1	PT-1	-	-
1508	STAFF LOUNGE	VP-13	VB-1	PT-1	PT-1	PT-1	PT-1	PLAM-11	PLAM-7
1509	I.T.	VCT-3	VB-3	PT-5	PT-5	PT-5	PT-5	-	-
1510	SOILED UTILITY	VCT-3	VB-3	PT-5	PT-5	PT-5	PT-5	PLAM-6	PLAM-7
1511	CLEAN STORAGE	VCT-3	VB-3	PT-5	PT-5	PT-5	PT-5	-	-
1512	JANITOR'S CLOSET	VCT-3	VB-3	PT-5	PT-5	PT-5	PT-5	-	-
1513	CORRIDOR	VP-13	VB-1	PT-1	PT-1	PT-1	PT-1	-	-
1514	CORRIDOR	VP-13	VB-1	PT-1	PT-1	PT-1	PT-1	-	-
1515	STORAGE	VP-13	VB-1	PT-1	PT-1	PT-1	PT-1	-	-
1516	STAFF TOILET	SV-3	SV-3	SEE NOTE 4; SEE 3/A7.1	SEE NOTE 4; SEE 3/A7.1	SEE NOTE 4; SEE 3/A7.1	SEE NOTE 4; SEE 3/A7.1	-	-
1517	CONTROL ROOM	CPT-3	VB-3	PT-1	PT-1	PT-1	PT-1	PLAM-11	PLAM-7
1518	BARIATRIC TOILET	SV-3	SV-3	SEE NOTE 4; SEE 3/A7.1	SEE NOTE 4; SEE 3/A7.1	SEE NOTE 4; SEE 3/A7.1	SEE NOTE 4; SEE 3/A7.1	-	-
1519	BARIATRIC SLRM.	CPT-3	VB-3	PT-7	PT-8	PT-7	PT-7	-	PLAM-9
1520	CORRIDOR	VP-13	VB-1	PT-1	PT-1	PT-1	PT-1	-	-

MATERIAL SCHEDULE			
INDICATION	MANUFACTURER	NAME	COLOR / PATTERN
CPT = CARPET			
CPT-3	BENTLEY PRINCE STREET	MODERN BLOCK 8MK28	STEEL TRUSS 801075
VB = VINYL BASE			
VB-1	ROPPE		191 CAMEL
VB-3	ROPPE		177 STEEL BLUE
PT = PAINT			
PT-1	BENJAMIN MOORE		1034 MUSLIN
PT-5	BENJAMIN MOORE		OC-56 MOONSHINE
PT-8	SHERWIN WILLIAMS		6235 FOGGY DAY
PT-7	SHERWIN WILLIAMS		7641 COLLONADE GRAY
PT-22	SHERWIN WILLIAMS		7656 RHINESTONE
PLAM = PLASTIC LAMINATE			
PLAM-1	WILSONART	RIVER CHERRY	7937-38
PLAM-6	WILSONART	FASHION GRAY	D381-60
PLAM-7	WILSONART	CARBON EV	4820-60
PLAM-9	WILSONART	PEARL SOAPSTONE	4886-38
PLAM-11	WILSONART	NATURAL COTTON	4946-38
WP = WALL PROTECTION			
WP-2	ALTRO	WHITEROCK (MATTE FINISH)	SNOWDRIFT / ICE 44
VP = VINYL PLANK			
VP-13	ARMSTRONG	NATURAL CREATIONS - MYSTIX	TP743 BUCKSKIN BRUNETTE (18" x 18" TILES)
VCT = VINYL COMPOSITE TILE			
VCT-3	ARMSTRONG		51807 SHADOW BLUE
SV = SHEET VINYL			
SV-3	ALTRO	RELIANCE 25	D2502 FOUNTAIN

These drawings, as instruments of service, remain the property of the Architect or Engineer. Any changes, publication, or use of any kind is prohibited unless expressly authorized by said party.

Copyright ©2017

Owner

DEBORAH HEALTH
MEDICAL OFFICE BUILDING

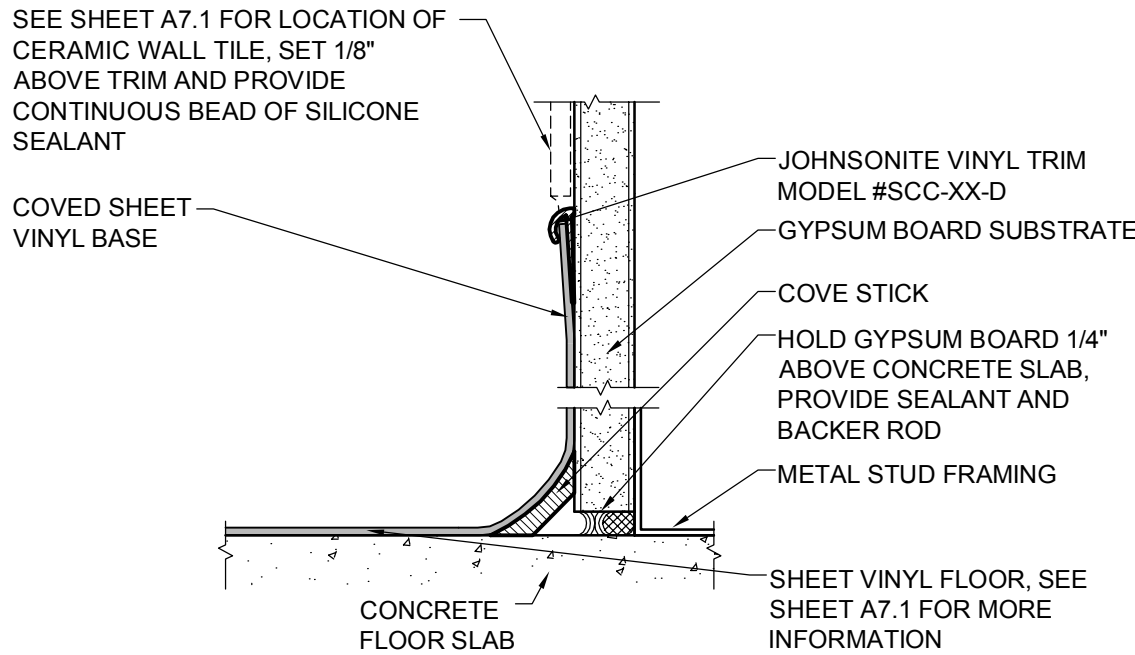


DHL SLEEP CENTER

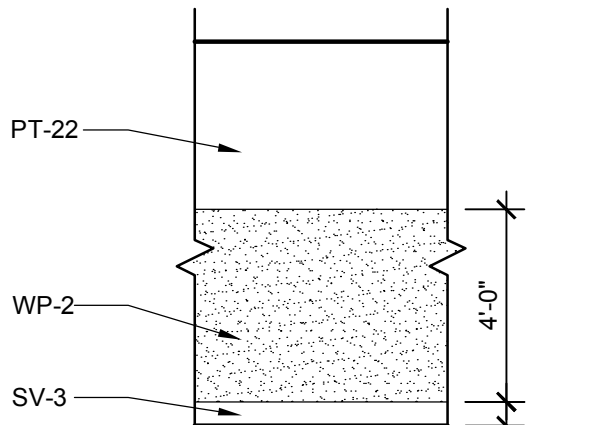
SUITE # 150

Revisions

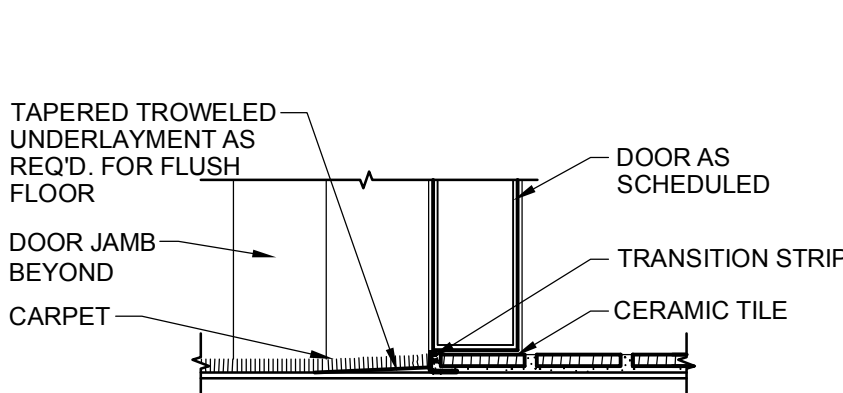
Issued For:		
No.	Description	Date
01	100% Construction Document Set	01/13/17



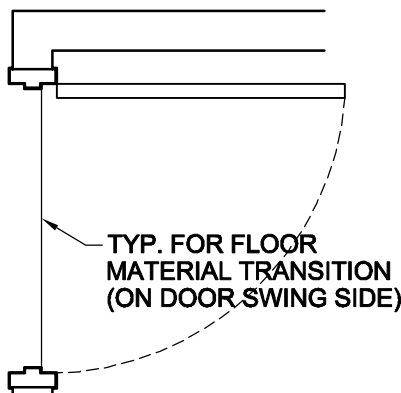
4 SHEET VINYL COVE DETAIL
SCALE: 6\"/>



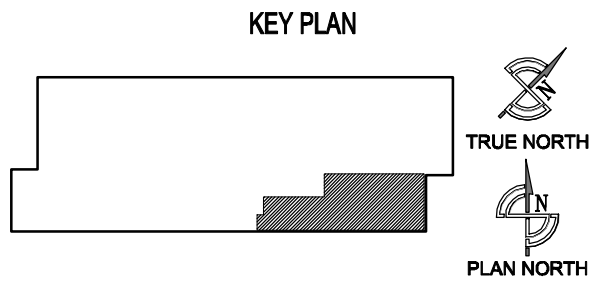
3 WALL PROTECTION ELEVATION
SCALE: 1/4\"/>



2 TRANSITION CARPET TO C.T.
SCALE: 3\"/>



1 FLOOR MATERIAL TRANSITION
SCALE: 1/2\"/>

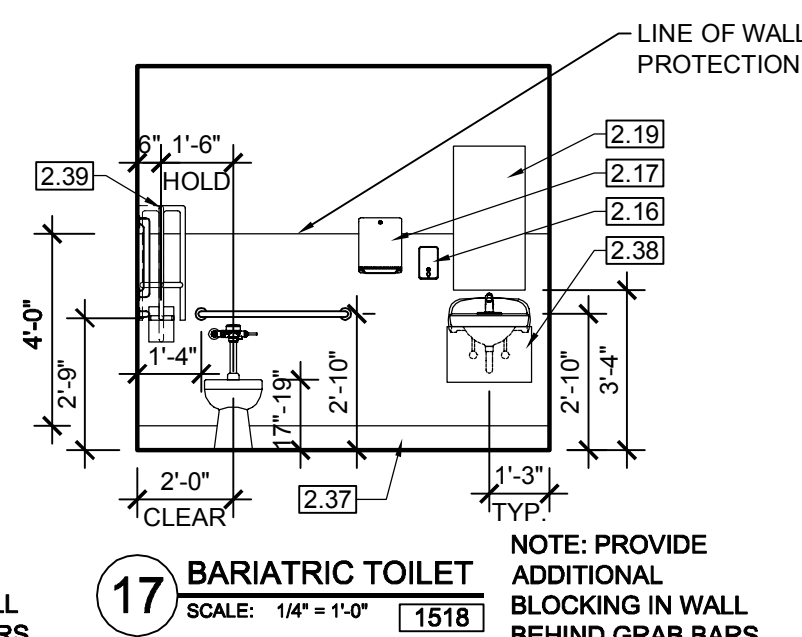
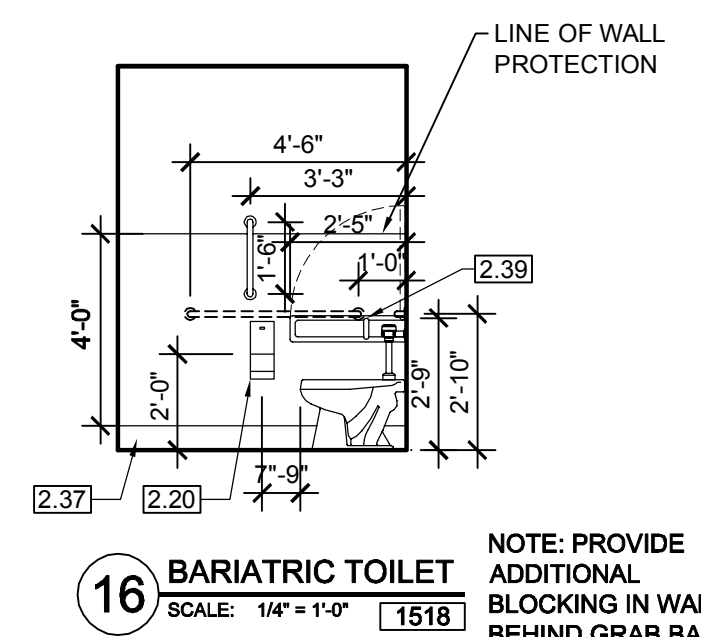
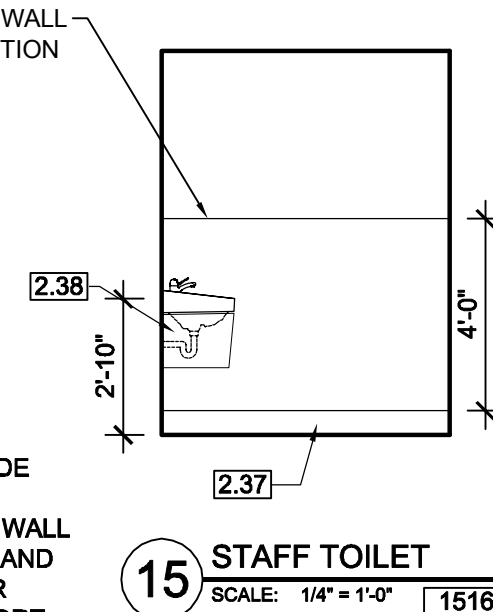
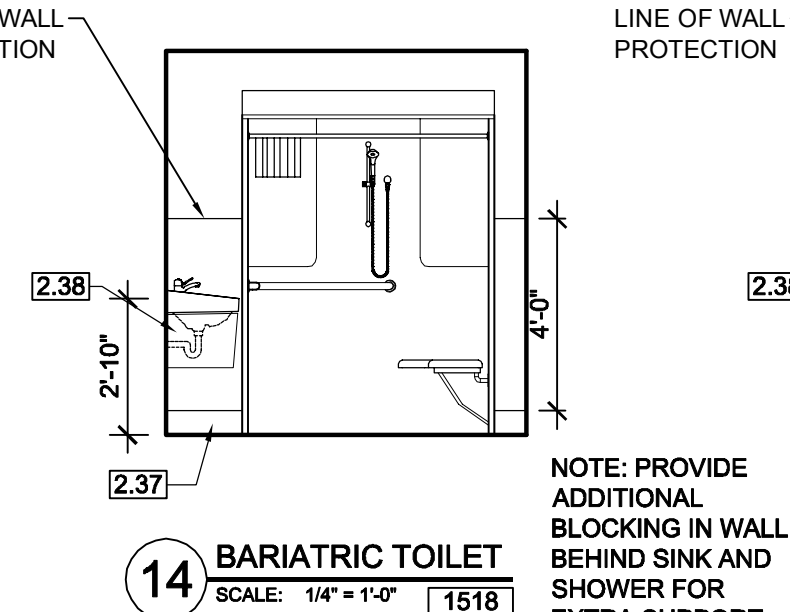
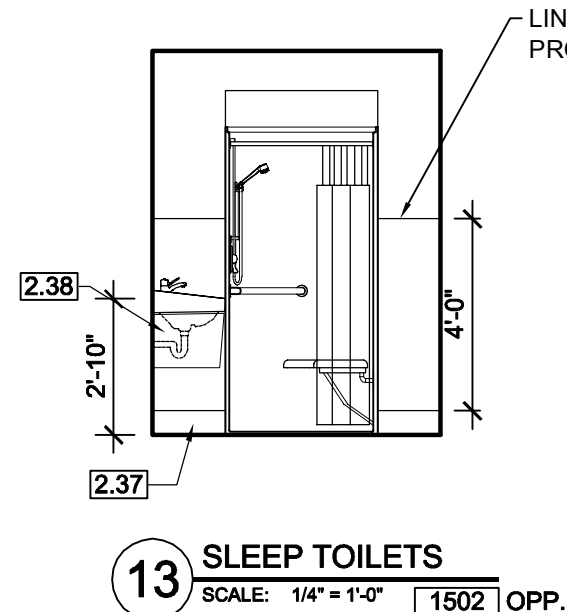
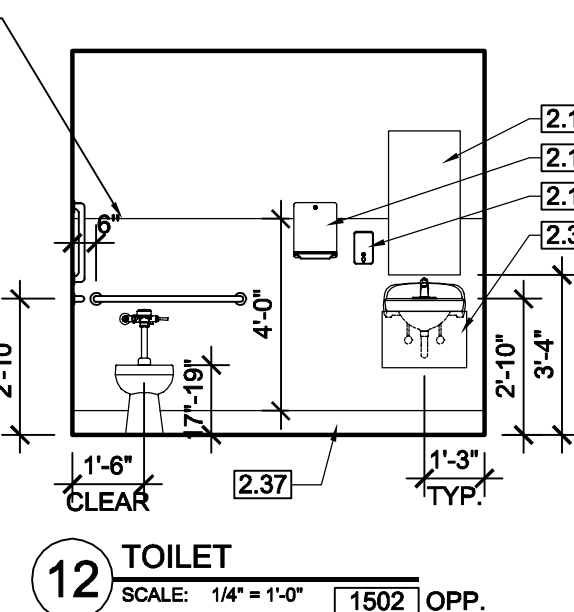
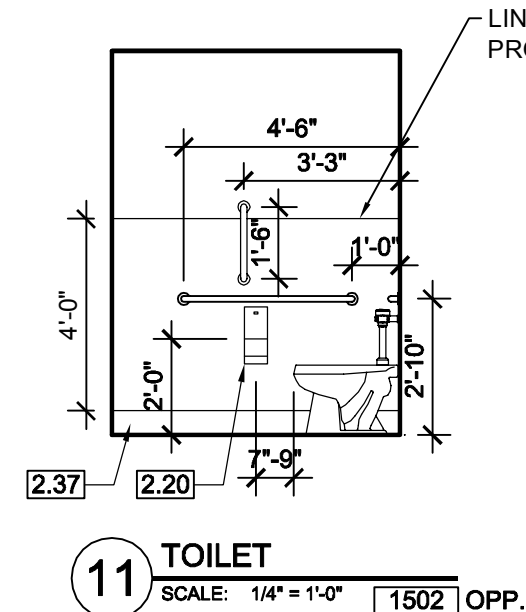
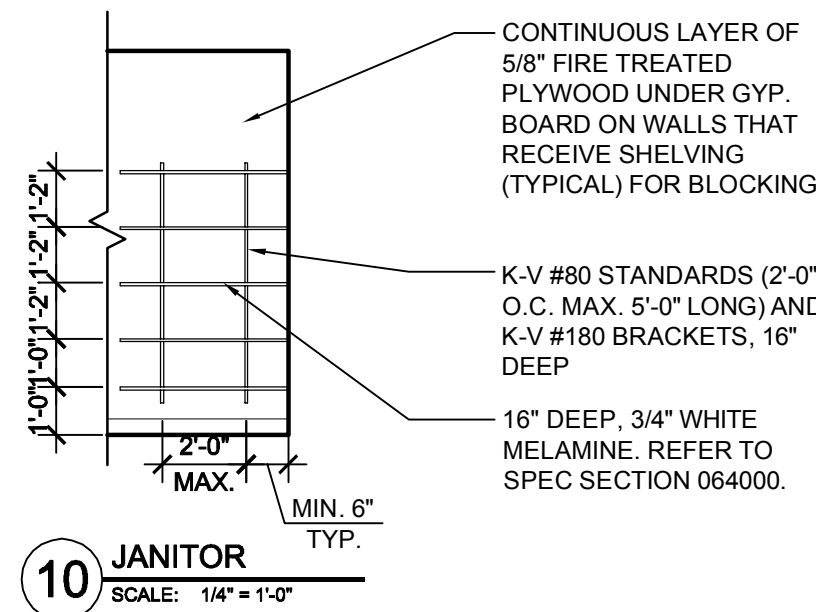
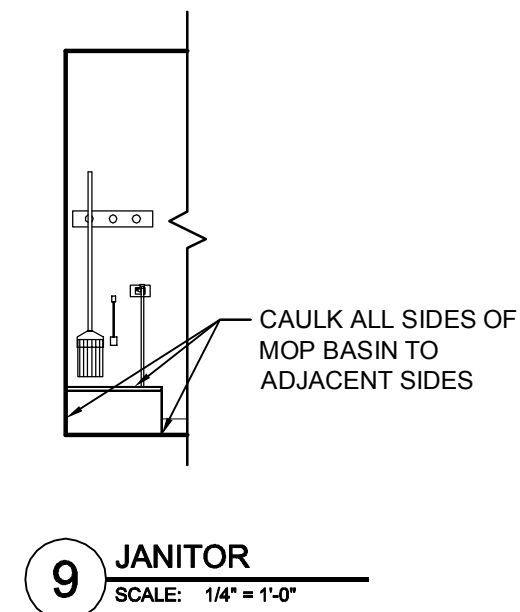
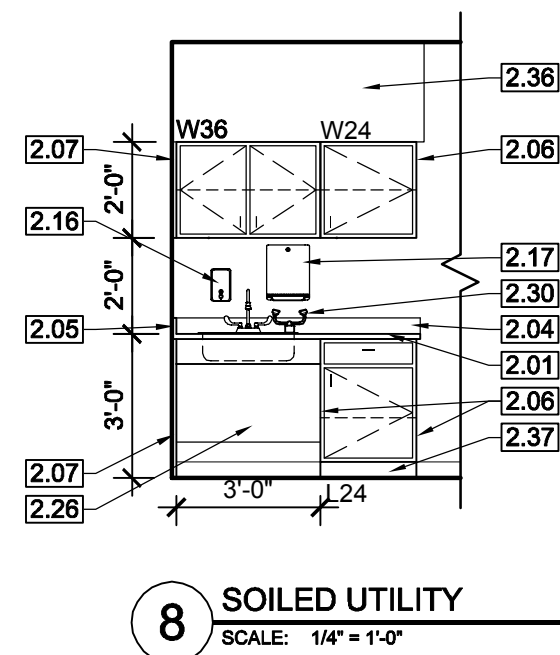
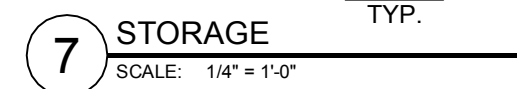
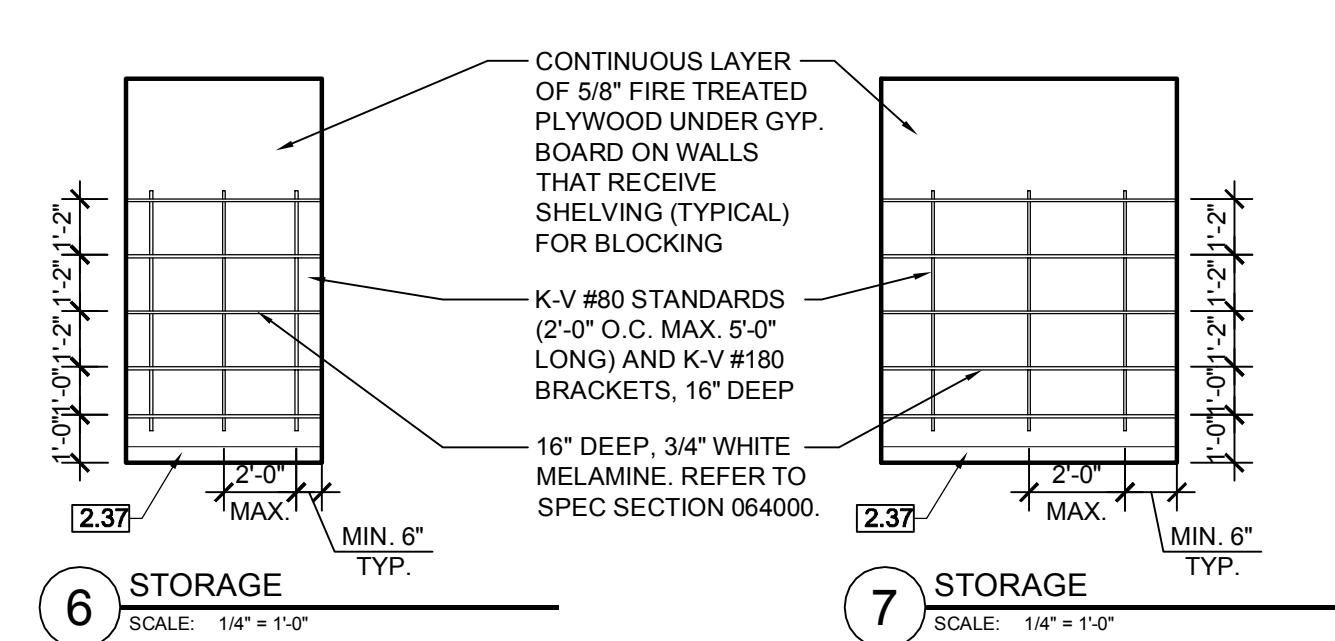
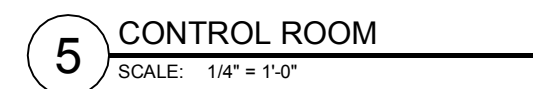
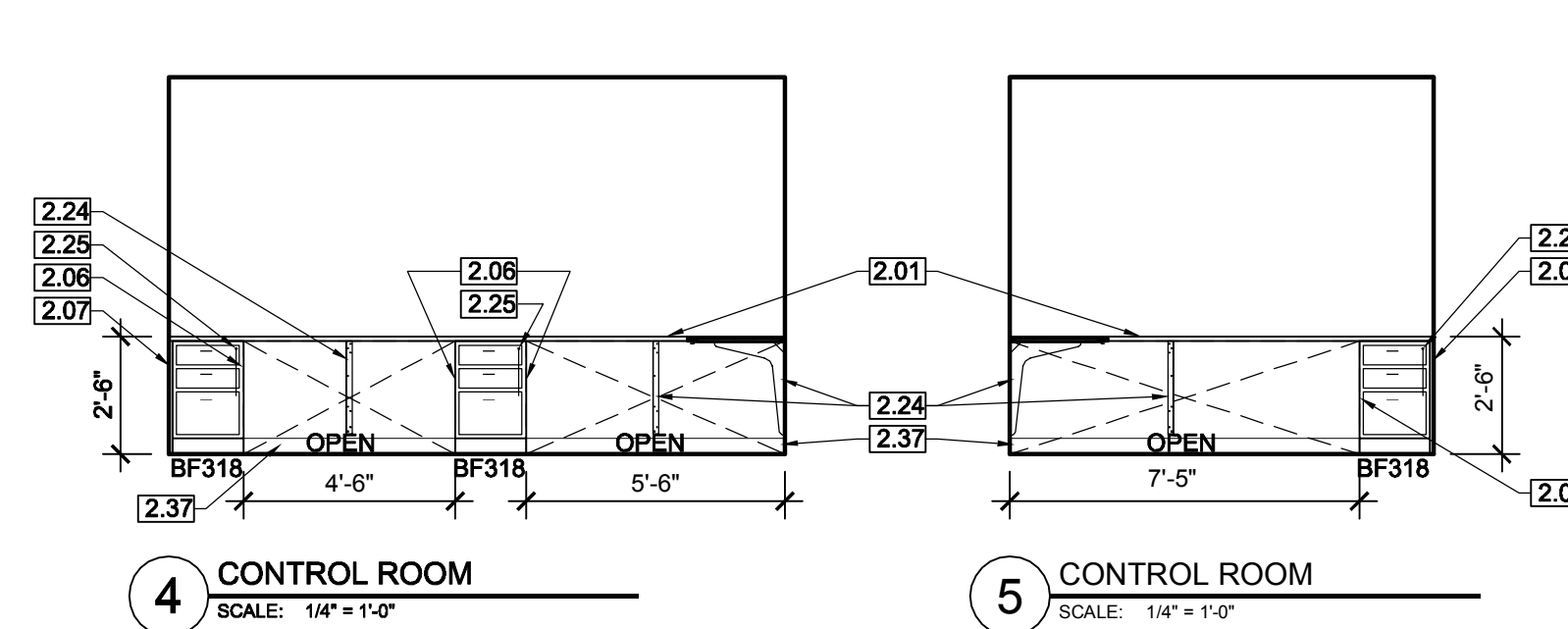
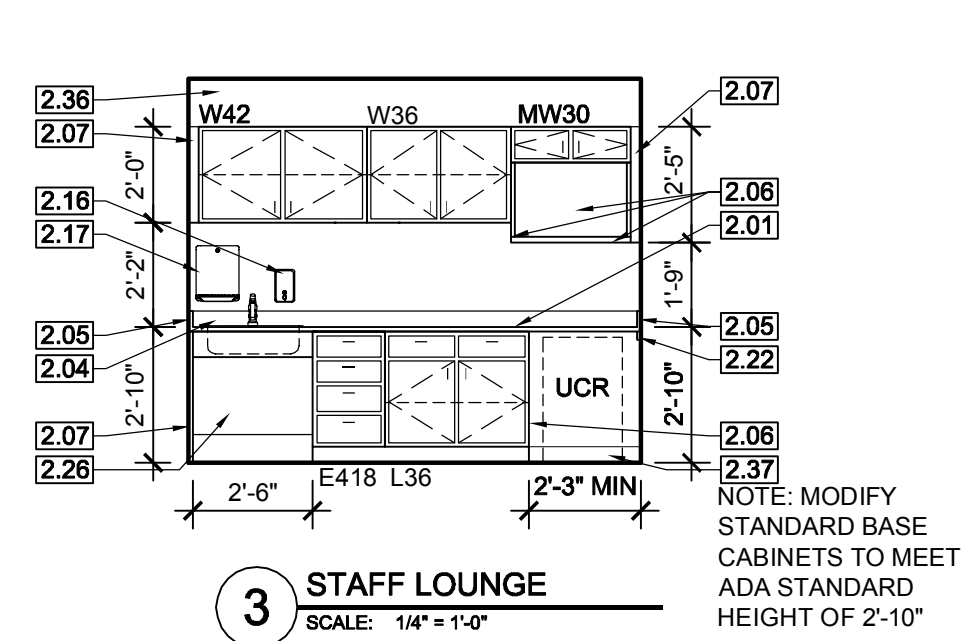
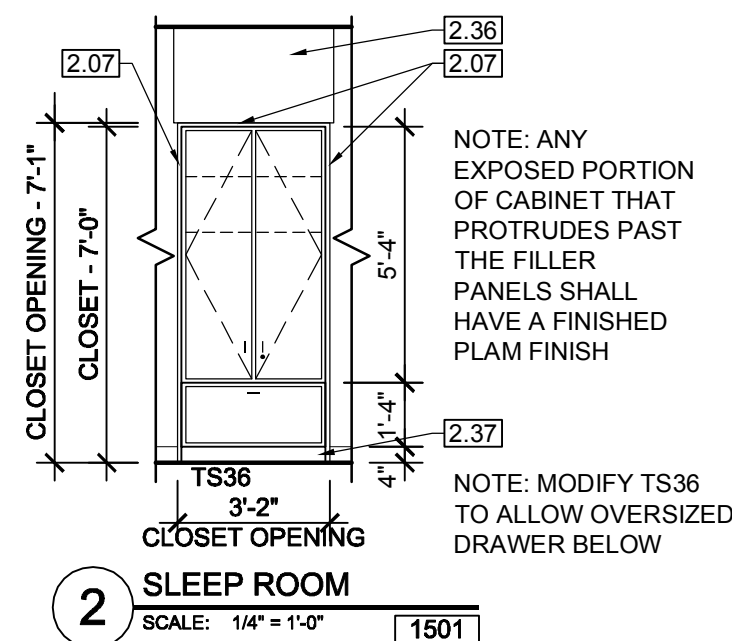
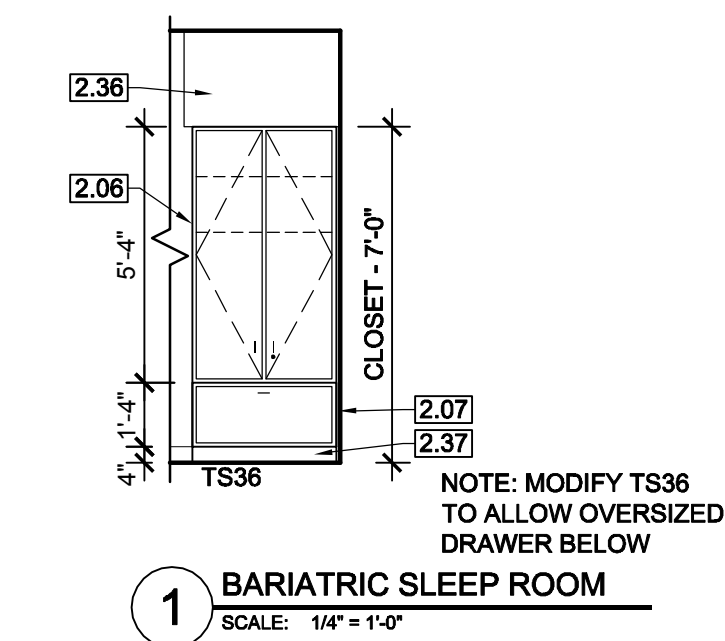


Drafted By: JTG	Checked By: AJV
Date Drafted: 01/13/17	

ROOM FINISH SCHEDULE
AND DETAILS

A7.1

SCALE: VARIES



These drawings, as instruments of service, remain the property of the Architect or Engineer. Any changes, publication, or use of any kind is prohibited unless expressly authorized by said party.

Copyright ©2017

Owner

DEBORAH HEALTH
MEDICAL OFFICE BUILDING

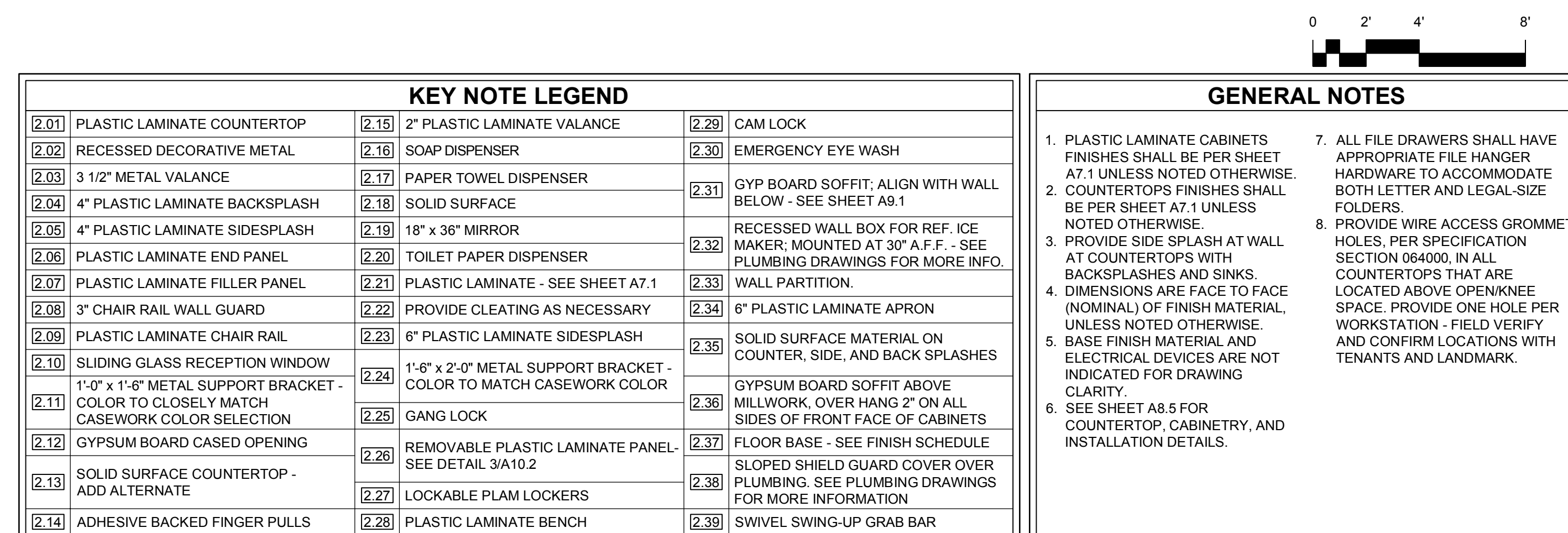


DHL SLEEP CENTER

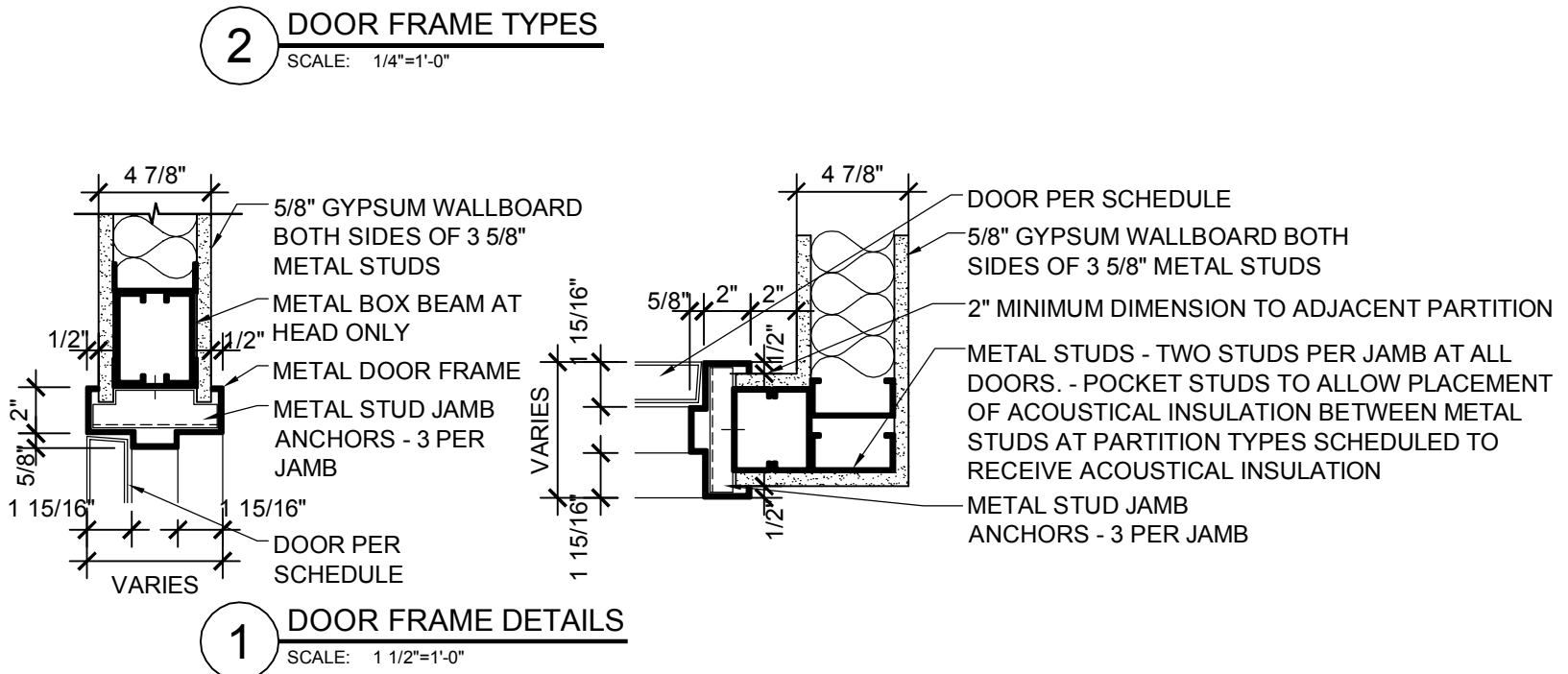
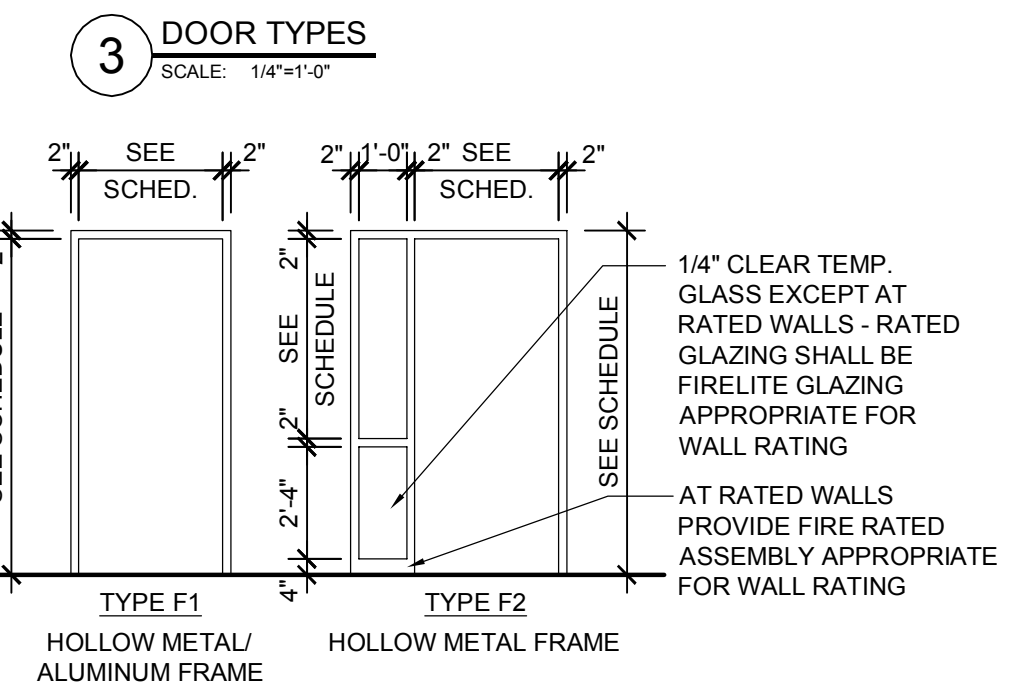
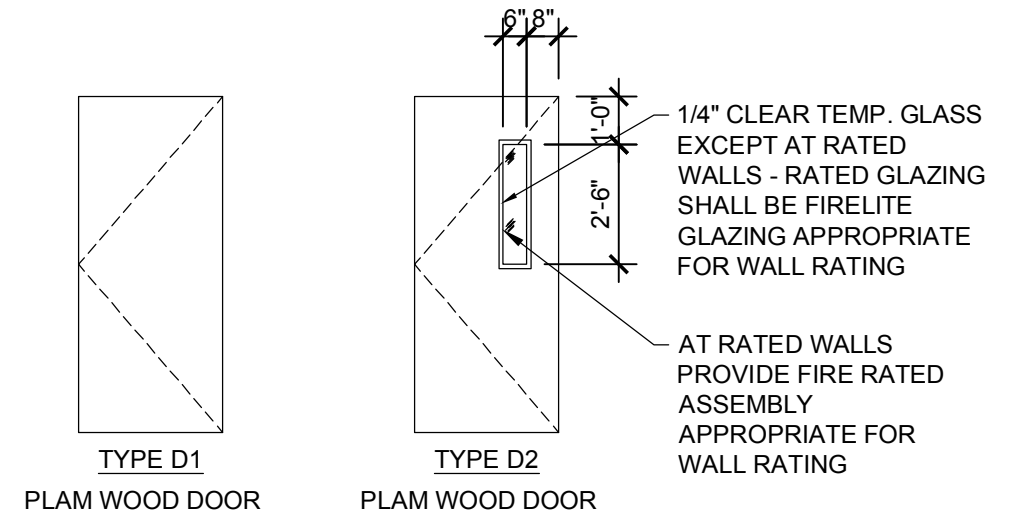
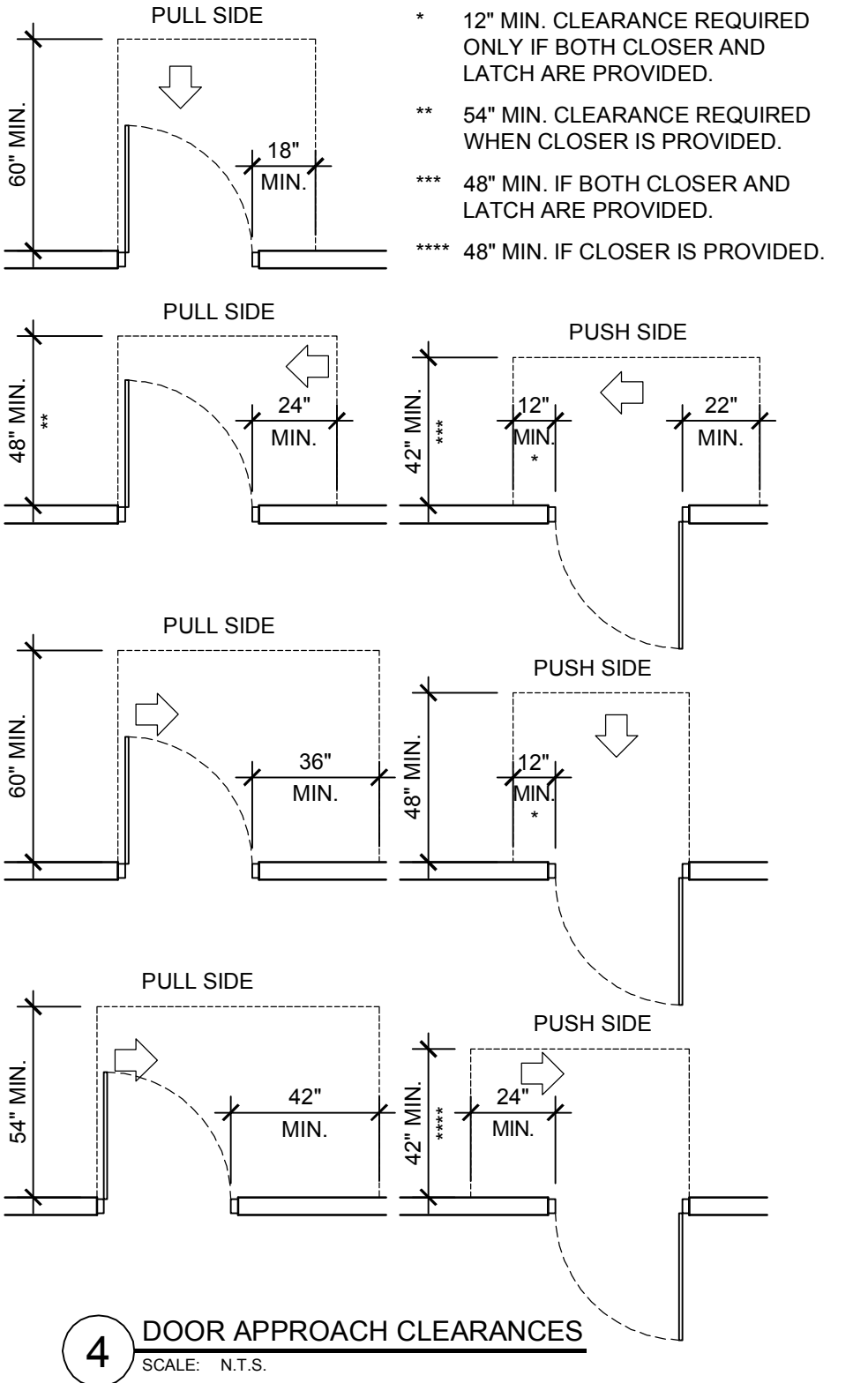
SUITE # 150

Revisions

Issued For:		
No.	Description	Date
01	100% Construction Document Set	01/13/17



DOOR SCHEDULE GENERAL NOTES									
1.	CONTRACTOR SHALL FURNISH AND INSTALL KEY CORES. LANDMARK SHALL CONFIRM SUITE KEYING REQUIREMENTS WITH TENANT AND PROVIDE TO CONTRACTOR.								
2.	CONTRACTOR SHALL UTILIZE WALL STOPS WHERE ALLOWABLE. FLOOR STOPS SHALL BE USED ONLY IF A WALL STOP IS NOT FEASIBLE OR OTHERWISE INDICATED.								
3.	CONTRACTOR SHALL PROVIDE NON-REMOVABLE HINGE PINS AT ALL INTERIOR, LOCKED, REVERSE-HANDED DOORS.								
4.	CONTRACTOR SHALL PROVIDE DOOR SILENCES AT ALL DOORS.								
5.	CONTRACTOR SHALL PAINT DOOR FRAME TO MATCH ADJACENT WALL UNLESS NOTED OTHERWISE ON DRAWINGS OR SCHEDULES.								
6.	PAINT CALLED OUT IS FOR INTERIOR SURFACE ONLY. EXTERIOR COLOR CALLED OUT AS PART OF CORE AND SHELL SHALL REMAIN AS IS.								
7.	CONTRACTOR SHALL SUPPLY CORBIN-RUSSWIN LOCKSET FOR THIS PROJECT. NO SUBSTITUTES WILL BE ACCEPTED. COORDINATE WITH TENANT AND OWNER THAT ALL LOCK SETS SHALL MATCH KEYING OF THE HOSPITAL.								



DOOR SCHEDULE																			
DOOR NO.	ROOM NAME	DOOR				FRAME		DETAILS				LABEL	HARDWARE	NOTES	KEYING				
		TYPE	MATL	FINISH	SIZE (1 3/4" THICK U.N.O.)	TYPE	MATL	FINISH	THRESH	JAMB	HEAD				JANITOR KEY	MASTER KEY	STAFF #1 KEY	STAFF #2 KEY	STAFF #3 KEY
(1500A)	VESTIBULE	D2	WD	PLAM-1	4'-0"x7'-0"	F2	HM	PT-7	-	1/A11.1	1/A11.1	45 MIN	A		3,9,11,12,13,16				
(118E)	EXISTING VESTIBULE	EX	EX	PT-7 NOTE 6	4'-0"x7'-0" (EX)	EX	HM	PT-7	-	-	-	-	M		3,10,14,16				
(1500C)	VESTIBULE	D1	WD	PLAM-1	4'-0"x7'-0"	F1	HM	PT-7 / PT-1	-	1/A11.1	1/A11.1	-	E		-				
(1501)	SLEEP ROOM 1	D1	WD	PLAM-1	3'-0"x7'-0"	F1	HM	PT-7 / PT-1	-	1/A11.1	1/A11.1	-	F		1,15				
(1502)	SLEEP TOILET 1	D1	WD	PLAM-1	3'-0"x7'-0"	F1	HM	PT-22 / PT-7	-	1/A11.1	1/A11.1	-	F		1,2,15				
(1503)	SLEEP TOILET 2	D1	WD	PLAM-1	3'-0"x7'-0"	F1	HM	PT-22 / PT-7	-	1/A11.1	1/A11.1	-	F		1,2,15				
(1504)	SLEEP ROOM 2	D1	WD	PLAM-1	3'-0"x7'-0"	F1	HM	PT-7 / PT-1	-	1/A11.1	1/A11.1	-	F		1,15				
(1505)	SLEEP TOILET 3	D1	WD	PLAM-1	3'-0"x7'-0"	F1	HM	PT-22 / PT-7	-	1/A11.1	1/A11.1	-	F		1,2,15				
(1506)	SLEEP ROOM 3	D1	WD	PLAM-1	3'-0"x7'-0"	F1	HM	PT-7 / PT-1	-	1/A11.1	1/A11.1	-	F		1,15				
(1507)	STORAGE	D1	WD	PLAM-1	3'-0"x7'-0"	F1	HM	PT-1	-	1/A11.1	1/A11.1	-	F		2				
(1508)	STAFF LOUNGE	D1	WD	PLAM-1	3'-0"x7'-0"	F1	HM	PT-1	-	1/A11.1	1/A11.1	-	F		-				
(1509)	I.T.	D1	WD	PLAM-1	3'-0"x7'-0"	F1	HM	PT-5 / PT-1	-	1/A11.1	1/A11.1	-	B		-				
(1510)	SOILED UTILITY	D1	WD	PLAM-1	3'-0"x7'-0"	F1	HM	PT-5 / PT-1	-	1/A11.1	1/A11.1	45 MIN	B		3,9,11				
(1511)	CLEAN STORAGE	D1	WD	PLAM-1	3'-0"x7'-0"	F1	HM	PT-5 / PT-1	-	1/A11.1	1/A11.1	45 MIN	B		3,9,11				
(1512)	JANITOR'S CLOSET	D1	WD	PLAM-1	3'-0"x7'-0"	F1	HM	PT-5 / PT-1	-	1/A11.1	1/A11.1	-	B		2				
(1514)	CORRIDOR	D1	WD	PLAM-1	4'-0"x7'-0"	F1	HM	PT-1	-	1/A11.1	1/A11.1	45 MIN	A		3,9,10,11,12,13				
(1515)	STORAGE	D1	WD	PLAM-1	(2) 2'-0"x7'-0"	F1	HM	PT-1	-	1/A11.1	1/A11.1	-	I		2				
(1516)	STAFF TOILET	D1	WD	PLAM-1	3'-0"x7'-0"	F1	HM	PT-22 / PT-1	-	1/A11.1	1/A11.1	-	F		1,2				
(1517)	CONTROL ROOM	D1	WD	PLAM-1	3'-0"x7'-0"	F1	HM	PT-1	-	1/A11.1	1/A11.1	-	C		1 (TWO REQUIRED)				
(1518)	BARIATRIC TOILET	D1	WD	PLAM-1	4'-0"x7'-0"	F1	HM	PT-22 / PT-7	-	1/A11.1	1/A11.1	-	F		1,2,15				
(1519)	BARIATRIC SLRM.	D1	WD	PLAM-1	4'-0"x7'-0"	F1	HM	PT-7 / PT-1	-	1/A11.1	1/A11.1	-	F		1,15				
DOOR SCHEDULE NOTES:																			
1. PROVIDE COAT HOOK MOUNTED AT 3'-4" ABOVE FINISHED FLOOR. VERIFY WITH LANDMARK PRIOR TO INSTALLATION.						8. POWER DOOR OPERATOR AND BUTTON (SEE ELECTRICAL FOR MORE INFORMATION)						11. PROVIDE SMOKE GASKET AT HEAD AND JAMBS.							
2. UNDERCUT DOOR 3'-4" ABOVE FINISH FLOOR.						9. IN RATED DOOR ASSEMBLIES, PROVIDE THE FOLLOWING HARDWARE IN ADDITION TO THE SPECIFIED COMPONENTS: A. CLOSER WITH HOLD OPEN. B. SMOKE SEALS. C. WHEN SCHEDULED, VISION PANEL GLAZING SHALL BE FIRELISTE NT OR FIRELISTE PLUS IN UL RATED FRAME.						12. PLAM ON SHELL AND CORE SIDE OF DOOR TO MATCH BUILDING STANDARD.							
3. ADD CLOSER W/ HOLD OPEN AS PART OF HARDWARE SET.												13. DOOR FRAME ON SHELL AND CORE SIDE OF DOOR TO MATCH ADJACENT WALL PAINT.							
4. USE OFFICE LOCKSET INSTEAD OF STANDARD.												14. COORDINATE WITH SHELL AND CORE DRAWINGS. SUITE SIDE OF DOOR AND FRAMES SHALL MATCH ADJACENT WALL COLOR.							
5. USE CLASSROOM LOCKSET INSTEAD OF LOCKSET SPECIFIED.												15. DOOR SHALL HAVE SOUND GASKETS AND SWEEPS							
6. PROVIDE ELECTRO-MECHANICAL CYLINDER LOCK, LATCH, AND BOLT - SEE SPECIFICATIONS FOR MORE INFO.						10. PROXY CARD READER AND ELECTRONIC KEYPAD ACCESS. PROVIDE ELECTRIFIED CENTER HINGE - SE SPECIFICATIONS FOR MORE INFO.						16. PROVIDE DOOR BELL TO ALERT CONTROL ROOM OF PATIENT PRESENT. CAMERA ABOVE DOOR TO ALSO ALERT MONITOR IN CONTROL ROOM.							
7. MECHANICAL CYPHER LOCK.																			

- DOOR SCHEDULE NOTES:
- PROVIDE COAT HOOK MOUNTED AT 3'-4" ABOVE FINISHED FLOOR. VERIFY WITH LANDMARK PRIOR TO INSTALLATION.
 - UNDERCUT DOOR 3/4" ABOVE FINISH FLOOR.
 - ADD CLOSER W/ HOLD OPEN AS PART OF HARDWARE SET.
 - USE OFFICE LOCKSET INSTEAD OF STANDARD.
 - USE CLASSROOM LOCKSET INSTEAD OF LOCKSET SPECIFIED.
 - PROVIDE ELECTRO-MECHANICAL CYLINDER LOCK, LATCH, AND BOLT - SEE SPECIFICATIONS FOR MORE INFO.
 - MECHANICAL CYPHER LOCK.
 - POWER DOOR OPERATOR AND BUTTON (SEE ELECTRICAL FOR MORE INFORMATION)
 - IN RATED DOOR ASSEMBLIES, PROVIDE THE FOLLOWING HARDWARE IN ADDITION TO THE SPECIFIED COMPONENTS:
 - CLOSER WITH OUT HOLD OPEN.
 - SMOKE SEALS.
 - WHEN SCHEDULED, VISION PANEL GLAZING SHALL BE FIRELITE NT OR FIRELITE PLUS IN UL RATED FRAME.
 - PROXY CARD READER AND ELECTRONIC KEYPAD ACCESS. PROVIDE ELECTRIFIED CENTER HINGE - SE SPECIFICATIONS FOR MORE INFO.
 - PROVIDE SMOKE GASKET AT HEAD AND JAMBS.
 - PLAM ON SHELL AND CORE SIDE OF DOOR TO MATCH BUILDING STANDARD.
 - DOOR FRAME ON SHELL AND CORE SIDE OF DOOR TO MATCH ADJACENT WALL PAINT.
 - COORDINATE WITH SHELL AND CORE DRAWINGS. SUITE SIDE OF DOOR AND FRAMES SHALL MATCH ADJACENT WALL COLOR.
 - DOOR SHALL HAVE SOUND GASKETS AND SWEEPS
 - PROVIDE DOOR BELL TO ALERT CONTROL ROOM OF PATIENT PRESENT. CAMERA ABOVE DOOR TO ALSO ALERT MONITOR IN CONTROL ROOM.

HARDWARE GROUPS			
HARDWARE SET A (SUITE ENTRY) (1) CLASSROOM LOCK SET (1-1/2) PAIR - BALL BEARING BUTT HINGES (1) WALL STOP (1) CLOSER	HARDWARE SET E (WAITING, STAFF CORRIDOR) (1) CLASSROOM LOCK SET (1-1/2) PAIR - STANDARD BUTT HINGES (1) WALL OR FLOOR STOP	HARDWARE SET H (LOCKABLE PAIR OF DOORS) (2) TOP AND BOTTOM THROUGH BOLTS (INACTIVE) (3) PAIR - STANDARD BUTT HINGES (1) CLASSROOM SET (2) WALL OR FLOOR STOP	HARDWARE SET K (BI-FOLD CLOSET DOOR) (1) FINGER PULL (1-1/2) PAIR - BI-FOLD DOOR HINGES (1) BI-FOLD DOOR HARDWARE
HARDWARE SET B (FILE, STOR., LAB., MED.) (1) STORAGE LOCK SET (1-1/2) PAIR - STANDARD BUTT HINGES (1) WALL OR FLOOR STOP	HARDWARE SET F (EXAM SPECIAL PROCEDURE, CLOSET) (1) PASSAGE SET (1-1/2) PAIR - STANDARD BUTT HINGES (1) WALL OR FLOOR STOP	HARDWARE SET I (PAIR OF CLOSET DOORS) (2) DUMMY TRIM, STRIKE AND PRESSURE LATCH (3) PAIR - STANDARD BUTT HINGES (2) WALL OR FLOOR STOP	HARDWARE SET L (CORRIDOR PAIR OF DOORS) (2) PANIC EXIT DEVICE (3) PAIR - STANDARD BUTT HINGES (2) REGULAR ARM CLOSER
HARDWARE SET C (RECEPTION, OFFICE) (1) OFFICE LOCK SET (1-1/2) PAIR - STANDARD BUTT HINGES (1) WALL OR FLOOR STOP	HARDWARE SET G (LEAD LINED DOORS) (1) PASSAGE SET (2) TOP AND BOTTOM PIVOTS (1) INTERMEDIATE PIVOT (1) WALL OR FLOOR STOP	HARDWARE SET J (SLIDING BI-PASS CLOSET DOOR) (2) FINGER PULLS (1) TOP TRACK AND BOTTOM GUIDE (1) BUMPER STOP	HARDWARE SET M (EXTERIOR DOOR) HARDWARE PROVIDED BY ALUMINUM ENTRANCE MANUFACTURER -PUSH/PULL -CYLINDER LOCK -TOP AND BOTTOM PIVOTS -INTERMEDIATE PIVOTS -CLOSER -THRESHOLD -SWEEP -WEATHER STRIPPING

LOCKSET GUIDE				
ENTRANCE/ CLASSROOM FREE OPERATION KEY LOCK	PASSAGE FREE OPERATION FREE OPERATION	OFFICE THUMB TURN LOCK KEY LOCK	STORAGE FREE OPERATION KEY TO OPEN FIXED LEVER	PRIVACY PUSH BUTTON LOCK EMERG. LOCK RELEASE

These drawings, as instruments of service, remain the property of the Architect or Engineer. Any changes, publication, or use of any kind is prohibited unless expressly authorized by said party.

Copyright ©2017

Owner

DEBORAH HEALTH MEDICAL OFFICE BUILDING



PLAN NORTH

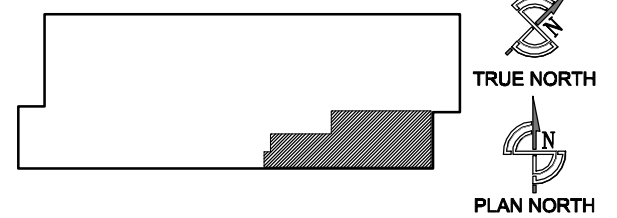
DHL SLEEP CENTER

SUITE # 150

Revisions

Issued For:
No. Description Date
01
100% Construction Document Set 01/13/17

KEY PLAN



Drafted By:
JTG

Checked By:
AJV

Date Drafted:
01/13/17

DOOR SCHEDULE, AND DETAILS

A11.1

SCALE: VARIES